



JOB NAME:

CAT#:

TYPE:

### APPLICATIONS

LED retrofit kit, converts an existing strip to an efficient LED luminaire. Material is die-formed 22 gauge steel, with high reflectance baked white enamel finish

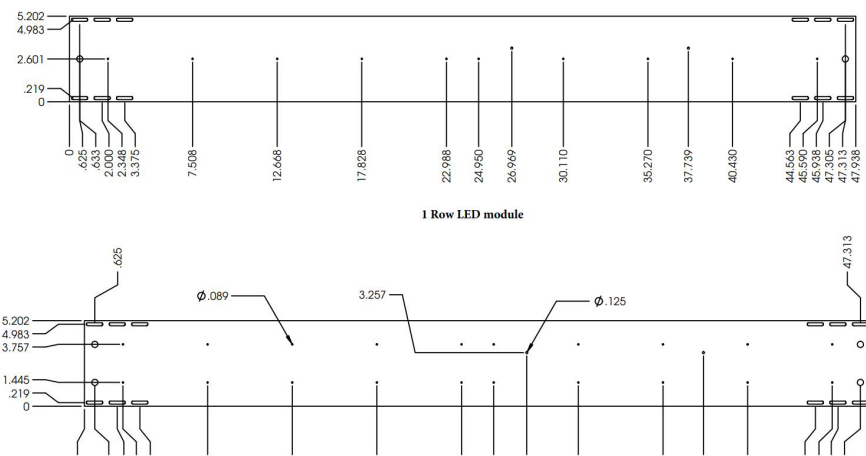
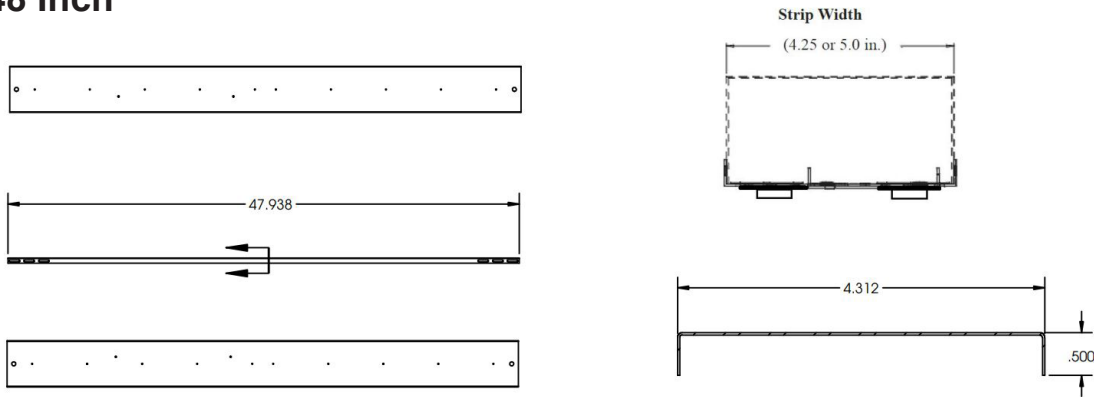
### FEATURES & BENEFITS

- Easy assembly and maintenance
- Available in 48" and 96" (4' & 8' lengths). Consult for 2',3', and 6'
- MIN CRI 80
- cETL<sub>us</sub> recognized as retrofit
- Estimated L<sub>70</sub> > 60,000hrs at 25°C



### DIMENSIONS

#### 48 Inch



RECOGNIZED COMPONENT

5 YEAR WARRANTY

ETL LISTED US

RECOVER USA

Buy American Act & the American Recovery and Reinvestment Act

Intertek

Dimensions and specifications subject to change without notice.



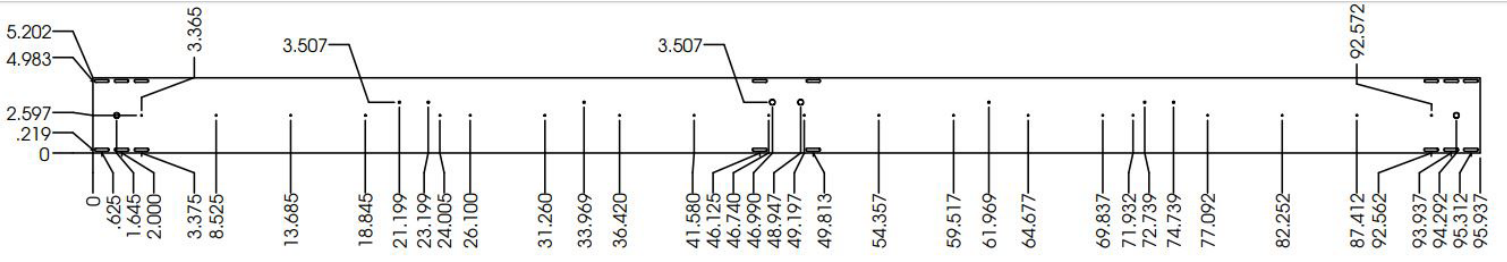
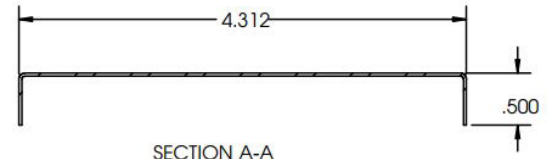
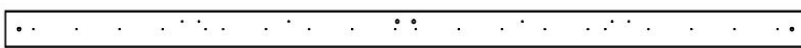
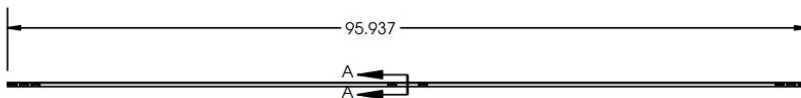
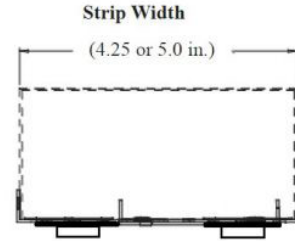
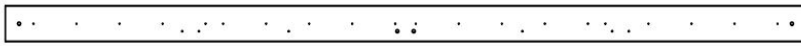
JOB NAME:

CAT#:

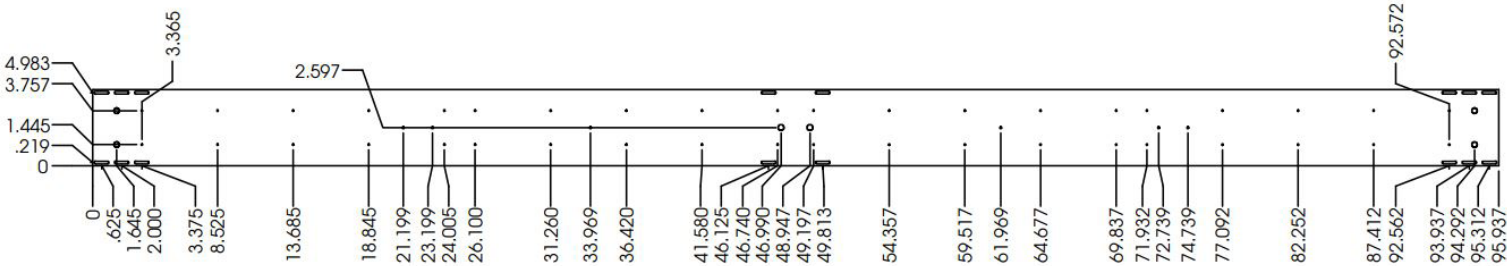
TYPE:

**DIMENSIONS**

**96 Inch**



**1 Row LED boards**



**2 Rows LED boards**



Dimensions and specifications subject to change without notice.



JOB NAME:

CAT#:

TYPE:

**ORDERING**

EXAMPLE: HBIA 48 LED 75 DMV 30 EM OS CS WG

RKBC		LED				
1. SERIES	2. LENGTH	3. WIDTH	4. GEAR	5. WATTAGE/LUMENS	5. DRIVER	7. COLOR TEMP
RKBC	48 48"	4 4.25"	LED	<u>4 ft.</u>		30 3000K
	96 96"	5 5"		24 24Watts 3470Lumens	DMV 120-277V Multivolt 0-10V Dimmable	35 3500K
			30 30Watts 4310Lumens		40 4000K	
			35 35Watts 4920Lumens		50 5000K	
			48 48Watts 6555Lumens		SDMV Step Dimming 120-277VAC 100%-40%	
			57 57Watts 7915Lumens		*Consult for Triac Dimming	
			72 72Watts 8200Lumens			
			<u>8 ft.</u>			
			24 24Watts 3470Lumens			
			48 48Watts 6555Lumens			
			57 57Watts 7915Lumens			
			60 60Watts 8620Lumens			
			70 70Watts 9840Lumens			
			97 97Watts 13110Lumens			
			118 118Watts 15830Lumens			

\*Consult for other wattages

**ACCESSORIES**

- A69 -Wire guard per 4 ft.
- L1085 -4ft. Frosted Lens\*
- L1085-TANDEM -8ft. Seamless Frosted Lens\*



Frosted lens accessory reduces LED glare\*

\*Frosted lens is for 4.25" width only



DLC Listed	
RKBC48(4 or 5)-LED24DMVxx	xx=30,35,40,50
RKBC48(4 or 5)-LED30DMVxx	xx=30,35,40,50
RKBC48(4 or 5)-LED35DMVxx	xx=30,35,40,50
RKBC48(4 or 5)-LED48DMVxx	xx=30,35,40,50
RKBC48(4 or 5)-LED57DMVxx	xx=30,35,40,50
RKBC96(4 or 5)-LED48DMVxx	xx=30,35,40,50
RKBC96(4 or 5)-LED60DMVxx	xx=30,35,40,50
RKBC96(4 or 5)-LED97DMVxx	xx=30,35,40,50
RKBC96(4 or 5)-LED118DMVxx	xx=30,35,40,50

Dimensions and specifications subject to change without notice.

