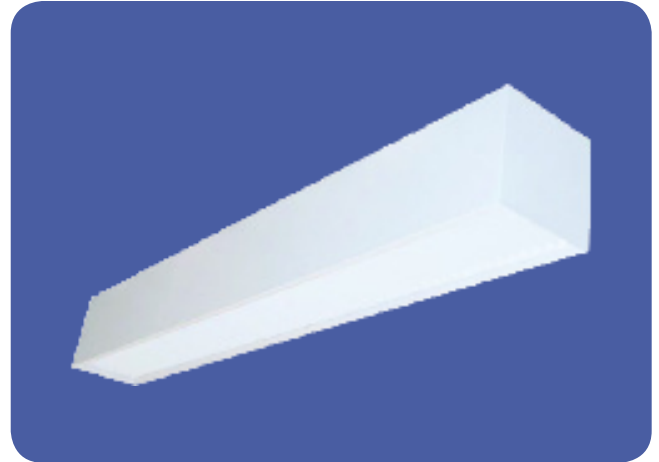


APPLICATIONS

The linear 4x4 wall mounted fixture is for distinctive architectural lighting plans. Ideal for corridors, lobbies and office areas. The 4x4 Series fixtures can be installed individually or in group patterns.

FEATURES & BENEFITS

- ◆ 2 or 4 lamp positions
- ◆ Fixtures can be surface mounted to the ceiling or pendant hung by stem, or cable
- ◆ Accepts various lenses or louvers
- ◆ 6' and 8' units have a steel mullion to join two individual diffusers
- ◆ Optional welded light-leak hinges are available on ends
- ◆ Alignment brackets are available for continuous row mounting
- ◆ Every fixture is individually tested
- ◆ **UL** listed for damp location



SPECIFICATIONS

Die-formed and welded 22-gauge cold rolled steel. Knockouts on ends allow continuous wireway mounting. A 1/2" regressed flange at the bottom insures uniformity and rigidity. Uplight fixtures have two rows of 1/2" x 4" apertures along the top of the housing to provide approximately 12% uplight for ceiling illumination.

ORDERING DATA

EXAMPLE: WM44 IOS232MVWH

WM44							
Series	Light Distribution	Lens [2]	# Lamps	Lamp Type [1]	Ballast [1, 3]	Finish [1]	Options
WM 44 Linear Wall Mount	DO Direct Only IO Uplight Only DI Direct/Indirect	SW Matte White .100 thick lens (Standard) S.5 Specualr Parabolic Louver (1/2"x1/2"x3/8") W5 White Parabolic Louver (1/2"x1/2"x3/8")	2	28 46" T5 32 48" T8 54 46" T5HO	MV 120 - 277V 120 120V 277 277V H120 120V, Hi-Lume [3] H277 277V, Hi-Lume [3] HMV Multivolt, Hi-Lume [3]	W White B Black SI Silver	See Below

OPTIONS

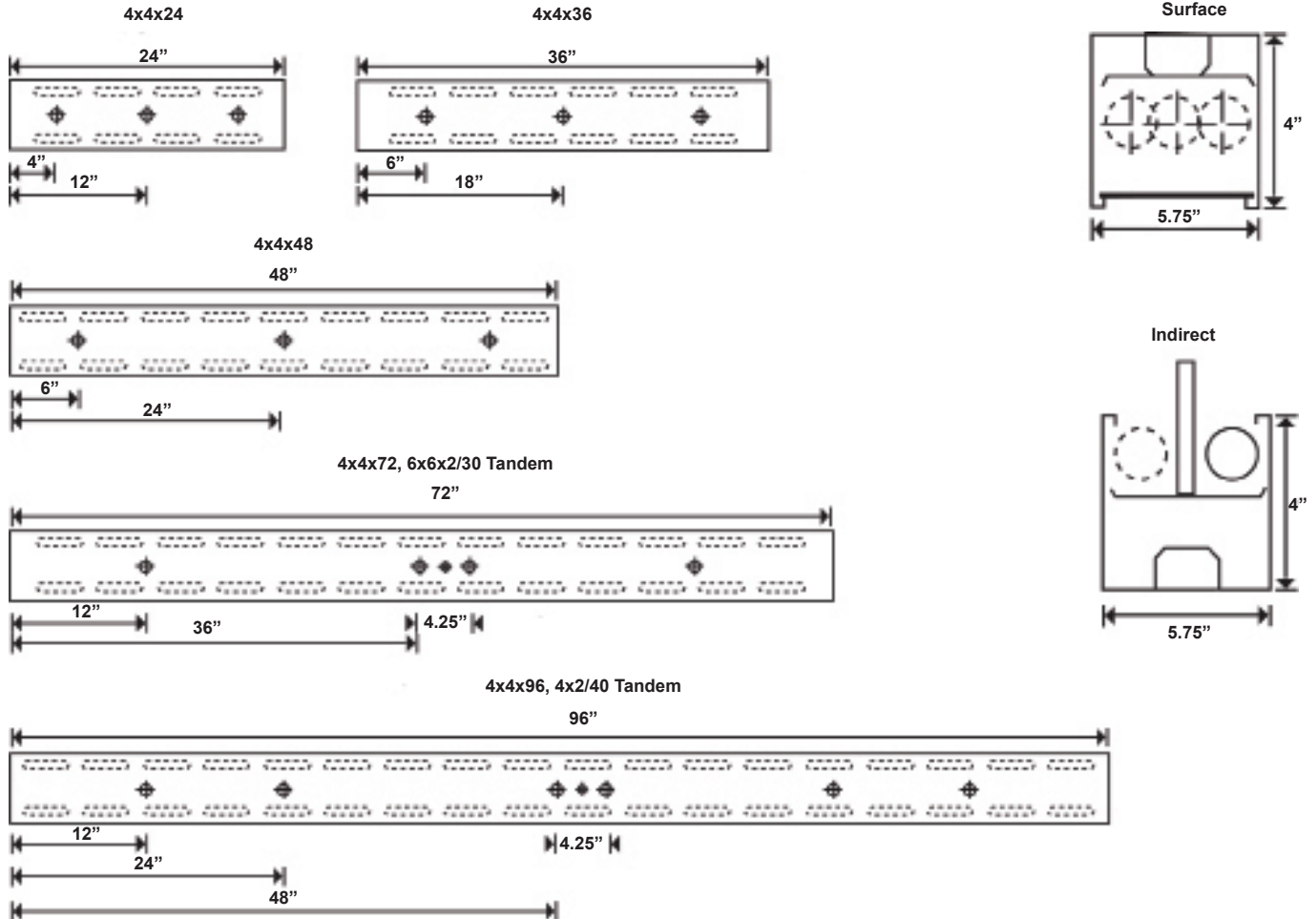
B1 Emergency ballast, 500 lumens
B3 Emergency ballast, 1400 lumens

NOTES

[1] Consult Factory for additional lamps, ballasts, finishes, and options.
[2] Custom louvers available in any cell configuration. Consult factory for additional information.
[3] HiLume and LoLume ballasts available for T8 lamps only.

Dimensions and specifications subject to change without notice.

DIMENSIONS



Dimensions and specifications subject to change without notice.