

APPLICATIONS

Premium grade enclosed and gasketed fluorescent fixture. For use in both indoor and outdoor applications where dust and water resistance is required. Ideal for marinas, barns, canopies, car washes, poultry farms, agricultural applications and other areas susceptible to corrosive conditions.

FEATURES & BENEFITS

- ◆ Dust and moisture resistant
- ◆ Virtually unbreakable fiberglass housing provides superior corrosion resistance
- ◆ Optional stainless steel mounting bracket with bail
- ◆ Optional tamperproof/vandalproof
- ◆ Optional silver MIRO4 reflector provides 94% reflectivity
- ◆ Optional narrow 4" width in 2' and 4' versions
- ◆ Available in 3 sizes: 2', 4' and 8' lengths
- ◆ White molded end plugs snap and lock to maintain tight seal of unused end holes
- ◆ 100% high impact resistant acrylic diffuser held with positive cam latches
- ◆ Continuous poured in-place gasket
- ◆ No open joints
- ◆ Available in T8 or T5 for long term energy savings
- ◆ Comes with gear tray to ease installation
- ◆ UL Listed for Wet Locations



SPECIFICATIONS

High quality enclosed fiberglass fixture features a unique continuous poured gasket which completely fills channel for maximum seal integrity. Diffuser is held in place with polycarbonate retaining latches. Stainless steel latches are recommended for the following applications: agriculture, car washes, food processing and swimming pools. Hole is 7/8" diameter and is provided with a plastic plug on one end for conduit attachment. Offset mounting pads which keeps luminaire level and slightly off of mounting surface are formed within the housing. Highly reflective coated interior surface improves efficiency. Standard diffuser is high impact acrylic with textured pattern designed for high efficiency while providing reduced glare. Listed by and bears **UL** label.

ORDERING DATA

EXAMPLE: VW232PMVB1

VW									
Series	Body		# of Lamps	Lamp Type		Ballast Type	Options ^{2, 3, 4, 5}	Accessories	
VW	Blank	Std width, 1 or 2 light	1	14	22" T5	MV	Multi-Volt	See Options Page	See Accessories Page
Premium Vaportight	N	4" Narrow; 1 light only	2	17	24" T8	120	120 Volt		
				24	22" T5HO	277	277 Volt		
				28	46" T5HO	PMV	Program Start Multi-Volt		
				32	48" T8	LED¹	Wired 1 end hot for T8 LED tubes		
				32TAN	2-48" T8 Tandem	LED2E¹	Wired 2 ends hot for T8 LED tubes		
				48T8HO	48" T8HO				
				48T12HO	48" T12HO				
				54	46" T5HO				
				54TAN	2-46" T5HO Tandem				
				96T8	96" T8SL				
				96T8HO	96" T8HO				
				96T12HO	96" T12HO				

Notes
 1) Assembled with no ballast, made for UL listed, self-ballasted retrofit LED lamps
 2) Mounting brackets and accessories sold separately.
 3) Battery Backup (#) if ordering separately.
 4) Lamps sold and shipped on the side.
 5) Call for additional options.

****See chart below for whip & cord ordering options**

**Cord & Whip Ordering Chart (Add to End of Fixture Part Number)						
Part No.	# of Wires	Length	End Fitting	Finish	Voltage	Amps (TL Only)
WP - Whip	(Blank) 3 Wire	(Blank) 6 feet	(Blank) No Plug	BK - Black	(Blank) 120-277V	15 - 15 Amps
CS - Cordset	4 - 4 Wire	8 - 8 feet	P* - Standard Plug	WH - White	120 - 120V	20 - 20 Amps
	5 - 5 Wire	10 - 10 feet	TL* - Twist Lock		277 - 277V	
	6 - 6 Wire	12 - 12 feet			347 - 347V	
		15 - 15 feet			480 - 480V	

Dimensions and specifications subject to change without notice.



◆ 800-444-WATT ◆ www.mobern.com ◆

8200 Stayton Drive, Ste. 500, Jessup, MD 20794

CAT#

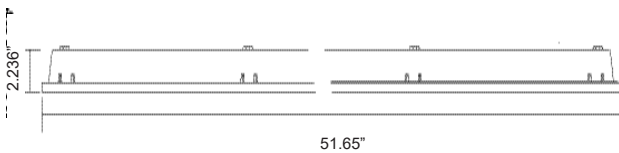
JOB NAME

TYPE

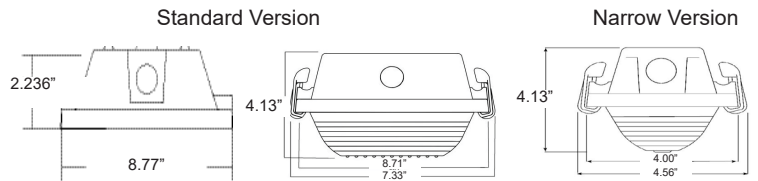
TECHNICAL INFORMATION

Brands		Performance Levels			
Code No.	Description	Ballast			
A	Advance	Manufacturer	Standard - Leave blank if no preference	High Efficiency Instant Start	High Efficiency Program Start
G	GE Ballast	Advance (A)	Centium ICN (A)	Optanium (AL, AN, AH)	Optanium PS (APL, APN ???)
L	Lutron	GE (G)	Proline GE (G)	UltraMax (GL, GN, GH)	UltraStart (GPL, GPH, GPH)
S	Sylvania Ballast	Osram/Sylvania (S)	Quicktronic Pro (S)	Quicktronic QHE (SL, SN, SH)	ProStart (SPL, SPN, SPH)
U	Universal	Universal (U)	ULT STD Electronic (U)	HP Electronic (UL, UN, UH)	AccuStart (UPI, UPN, UPH)

Side View



End View



Dimensions	Length	Width	Fixture Depth Options	
2 ft.	27.68"	8.77"	SSC + SSF	4.27"
4 ft.	51.85"	8.77"	RF + RC	4.38"
8 ft.	100.00"	8.77"	SC + SF	5.75"

*Available 2' and 4' only

OPTIONS & ACCESSORIES

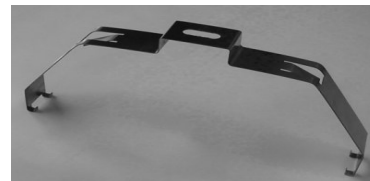
- | | | |
|---------------------------|---|---|
| A Advance Ballast | B1 T8/T5 1L 500 Lumens Battery Backup (B11) | 11 Dual Ballasts 1 Lamp + 1 Lamp |
| G GE Ballast | B2 T8/T5 1L/2L 700 Lumens Battery Backup (B48) | 21 Dual Ballasts 2 Lamp + 1 Lamp |
| L Lutron | B3 T8/T5 1L/2L 1400 Lumens Battery Backup (B223) | 22 Dual Ballasts 2 Lamp + 2 Lamp |
| S Sylvania Ballast | B51 T5HO 1L 500 Lumens Battery Backup (B625) | 31 Dual Ballasts 3 Lamp + 1 Lamp |
| U Universal | B52 T5HO 1L 800 Lumens Battery Backup (B585) | PC Polycarbonate Lens |
| | B53 T5HO 1L 1300 Lumens Battery Backup (B626) | SL Stainless Steel Latches |



Stainless steel latch kit
2 Ft. & 4 Ft. - **H126**
8 Ft. - **H127**



Stainless steel mounting bracket w/bail
VW-MB2L-B-2PK
(Recommended for cable hanging)



Stainless steel mounting bracket
VW-MB2L-2PK



Replacement clear polycarbonate latch kit
2 Ft. & 4 Ft. - **H123**
8 Ft. - **H124**

Replacement Lens

L529	VW 2 ft
L527	VW 4 ft
L528	VW 8 ft

Dimensions and specifications subject to change without notice.



CAT#	
JOB NAME	
TYPE	