

APPLICATIONS

A linear 2x2 or 2x4 for distinctive architectural lighting plans. Ideal for corridors, lobbies and office areas. RL series fixtures can be installed individually or in a continuous run. Specially designed for direct lighting with snap in lens to hide the LED arrays.

FEATURES & BENEFITS

- ◆ Fixture accepts various lenses and louvers
- ◆ Fixtures can be recessed mounted to the ceiling
- ◆ Designed around a long lasting and efficient LED module
- ◆ IC Rated
- ◆ cETL_{US} listed for damp locations up to 67 watts



SPECIFICATIONS

Die formed and welded 22 gauge cold rolled steel. It allows continuous wireway mounting. Housing is specially designed to direct lighting with separating compartments for each.

ORDERING DATA

EXAMPLE: RL22-FRLED28DMVWH40

RL		LED									
Series	Size	Lens	Gear	Wattage	Driver Type	Finish	Kelvin Temperature	Options			
RL Recessed Linear	22 2 x 2 24 2 x 4	FR Snap in Acrylic Lens	LED	2 x 2. 24 24 Watts 28 28 Watts 2 x 4. 32 32 Watts 48 48 Watts 57 57 Watts	DMV 120-277V Multivolt 0-10V Dimmable SDMV Step dimming Multivolt DHV 347-480VAC 0-10V Dimming D347V 347VAC 0-10V Dimming D120 Triac Dimming 120VAC D277 Triac Dimming 277VAC	WH White SL Silver BK Black IN Iron RD Red	30 3000k 35 3500k 40 4000k 50 5000k	WP 6' Whip3 Wire Consult factory for other options			

TECHNICAL INFORMATION

Size	Wattage	Initial Lumens (lm)	Efficacy (lm/W)	Kelvin Temperature	CRI
2 x 2	24	2400	100	30K,35K,40K,50K	80+
2 x 2	28	2700	96	30K,35K,40K,50K	80+
2 x 4	32	3450	108	30K,35K,40K,50K	80+
2 x 4	48	4800	100	30K,35K,40K,50K	80+
2 x 4"	57	5400	95	30K,35K,40K,50K	80+

Dimensions and specifications subject to change without notice.

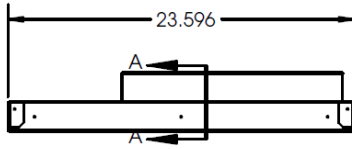
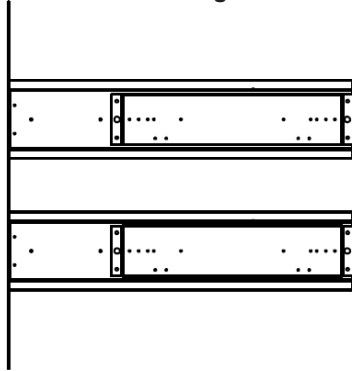


◆ 800-444-WATT ◆ www.mobern.com ◆
8200 Stayton Dr., Ste. 500, Jessup, MD 20794

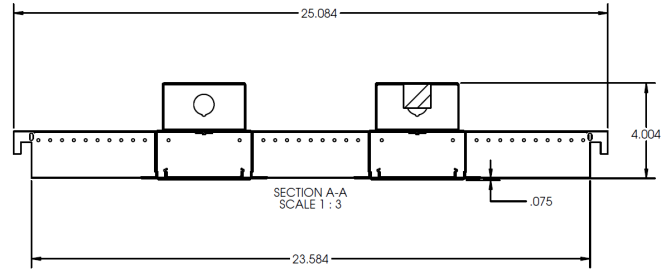
CAT#			
JOB NAME		TYPE	

DIMENSIONS

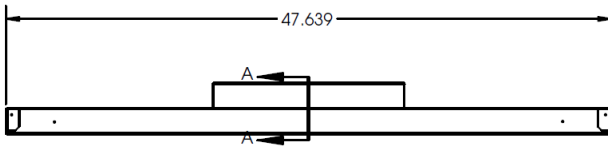
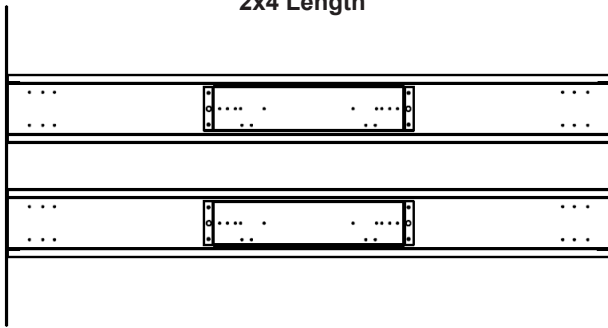
2x2 Length



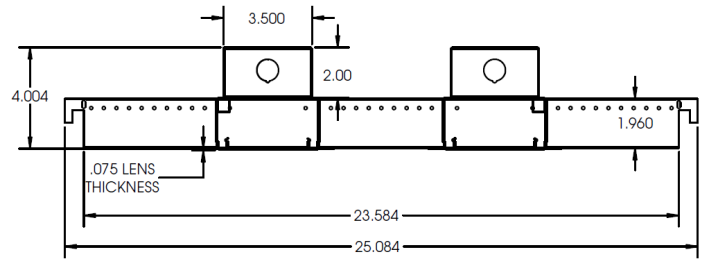
2x2 Width



2x4 Length



2x4 Width



Dimensions and specifications subject to change without notice.



◆ 800-444-WATT ◆ www.mobern.com ◆
8200 Stayton Dr., Ste. 500, Jessup, MD 20794

CAT#	
JOB NAME	TYPE