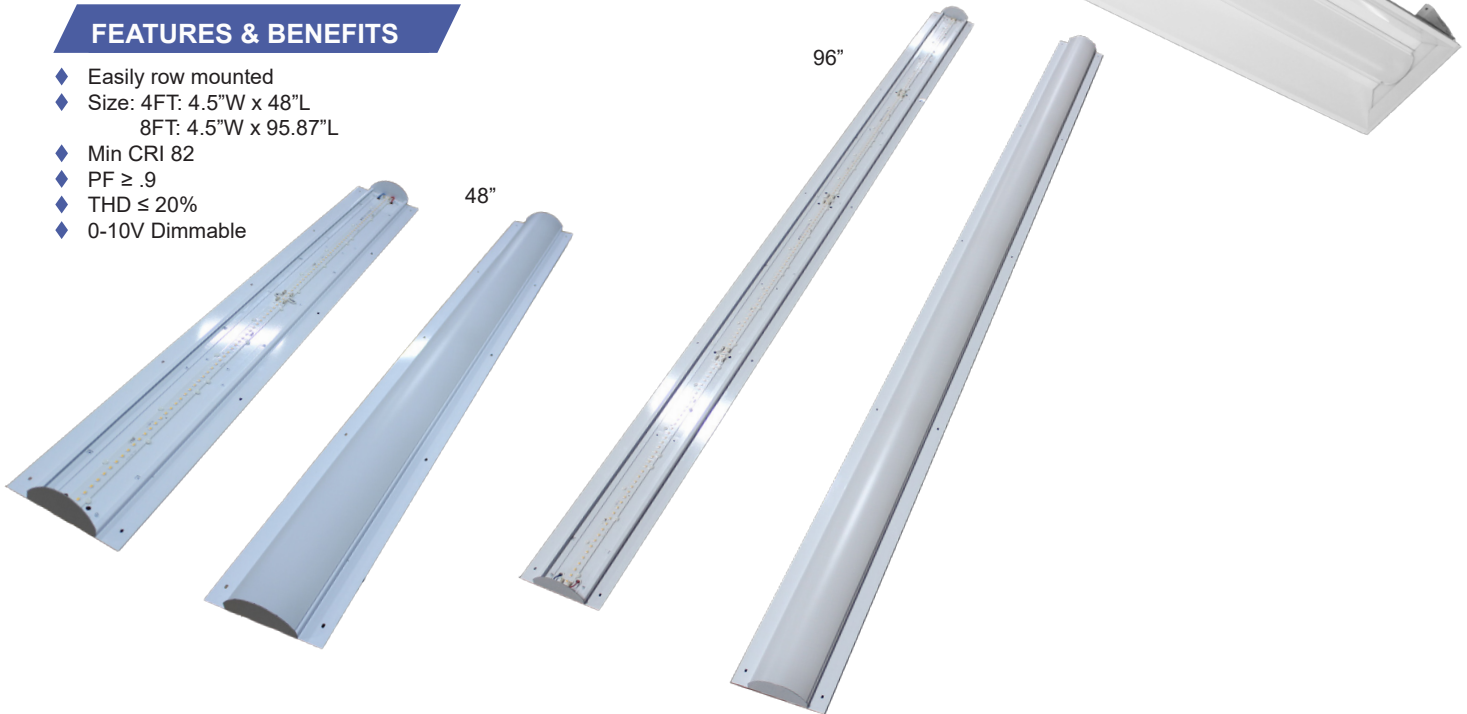


APPLICATIONS

Give your area a new clean and sleek look with this designer series retrofit solution. This fixture is sure to enhance any environment. Designed to convert your old 4' or 8' T12 or T8 linear or industrial fixtures with New LED Technology. This retrofit kit is cost effective and makes this a perfect lighting solution for: schools, retail, warehouses, storage or any other facility area currently using fluorescent fixtures.

FEATURES & BENEFITS

- ◆ Easily row mounted
- ◆ Size: 4FT: 4.5"W x 48"L
8FT: 4.5"W x 95.87"L
- ◆ Min CRI 82
- ◆ PF ≥ .9
- ◆ THD ≤ 20%
- ◆ 0-10V Dimmable



ORDERING DATA

EXAMPLE: RKITBCR48P-LED22DMVFR30

			LED						
Series	Configuration	Size	Gear	Wattage/Lumens	Driver	Lens	Color Temp		
RKITB Retail Recessed LED Retrofit Kit	(Blank) Individual CR Continuous Run	48 47.87" 96 95.87"	LED	48 in. 22 22 Watts 2682 Lumens 24 24 Watts 3475 Lumens 30 30 Watts 4310 Lumens 35 35 Watts 4920 Lumens 48 48 Watts 6475 Lumens 57 57 Watts 7755 Lumens 97 97 Watts 13580 Lumens 96 in. 24 24 Watts 3475 Lumens 44 44 Watts 5358 Lumens 48 48 Watts 6475 Lumens 57 57 Watts 7755 Lumens 70 70 Watts 9840 Lumens 97 97 Watts 12950 Lumens 118 118 Watts 15510 Lumens 166 166 Watts 24000 Lumens	DMV 120-277VAC 0-10V Dimming Multivolt	FR Frosted	30 3000K 35 3500K 40 4000K 50 5000K		

DLC LISTED
RKITB48-LED22DMVFR35
RKITB48CR-LED22DMVFR35
RKITB96-LED44DMVFR35
RKITB96CR-LED44DMVFR35



Dimensions and specifications subject to change without notice. ©



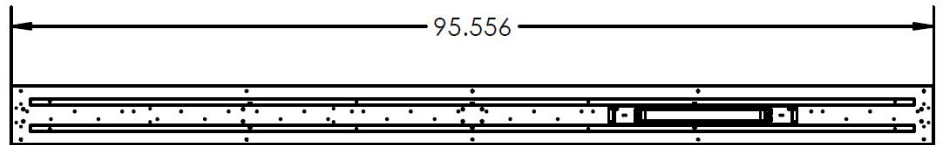
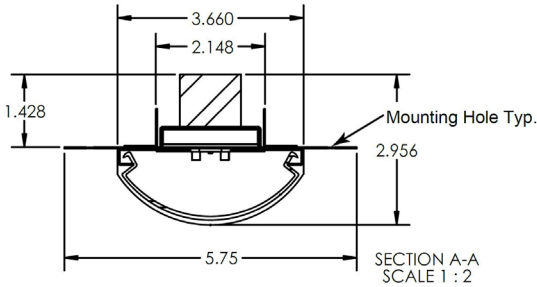
◆ 800-444-WATT ◆ www.mobern.com ◆

8200 Stayton Dr., Ste. 500, Jessup, MD 20794

CAT#	
JOB NAME	
TYPE	

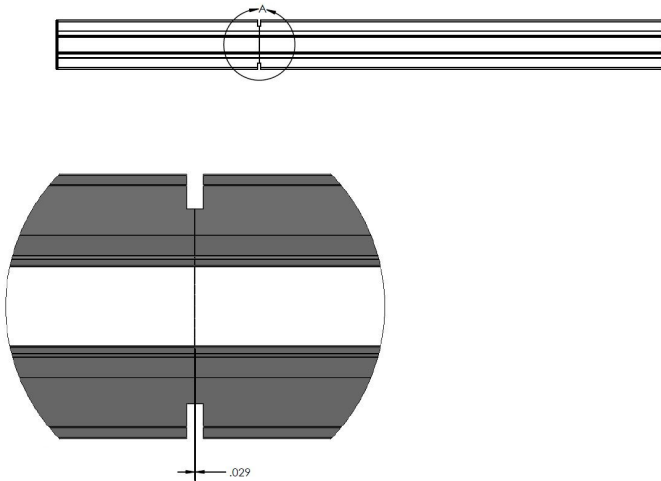
DIMENSIONS

Dimensions In Inches



ROW MOUNTING

Row Mounting Connection



Dimensions and specifications subject to change without notice.



CAT#	
JOB NAME	TYPE