

APPLICATIONS

Premium quality low profile troffer with an almost limitless range of applications. Ideal for all commercial and industrial buildings requiring general illumination with recessed configurations.

FEATURES & BENEFITS

- ◆ Min CRI 82
- ◆ L70 >60,000 hrs
- ◆ IC Rated
- ◆ Corrosion and scratch resistant
- ◆ Smooth edges for easy handling
- ◆ Ends are secured by snap-in interlocking system
- ◆ .100 acrylic prismatic lens is standard
- ◆ Exclusive "Light Lock" frame reduces light leaks
- ◆ Flush steel door with rotary action cam latches and hinges from either side
- ◆ Easy access plate for quick wiring
- ◆ Equipped with Integral Earthquake Clips
- ◆ cETL_{us} listed for damp locations up to 95 watts
- ◆ DLC listed in certain models - consult DLC QPL for verification

SPECIFICATIONS

Housing is die-formed and embossed from cold rolled steel. Wiring access plate and knockouts are provided on back of housing allowing for flexible greenfield attachment. Driver cover snaps easily into place eliminating the need for tools when accessing the driver. Prismatic lens is held within a hinged steel frame door. The heavy gauge door frame hinges downward on either side and is held in the closed position by two positive cam latches. Knockouts are provided on ends for continuous wiring.



ORDERING DATA

EXAMPLE: RG22-LED35DMV40

RG			Wattage & Lumens		Driver		Color Temp		Options	
Series	Size	Gear								
RG	14	1x4			DMV	120-277V Multivolt	30	3000K		
LED Grid	22	2x2			SDMV	0-10V Dimmable	35	3500K		
	24	2x4				Multivolt	40	4000K		
					DHV	347-480VAC	50	5000K		
DLC Listed Models			Standard 1x4		D347	0-10V Dimming				
RG14-LED22DMVxx		xx=30,35,40,50	22	22 Watts 2810 Lumens	D120	347VAC				
RG14-LED30DMVxx		xx=30,35,40,50	30	30 Watts 3585 Lumens	D277	0-10V Dimming				
RG14-LED35DMVxx		xx=30,35,40,50	35	35 Watts 4090 Lumens		Triac Dimming				
RG14-LED40DMVxx		xx=30,35,40,50	40	40 Watts 4590 Lumens		120VAC				
RG14-LED48DMVxx		xx=30,35,40,50	48	48 Watts 5385 Lumens		277VAC				
RG14-LED57DMVxx		xx=30,35,40,50	57	57 Watts 6370 Lumens						
RG22-LED20DMVxx		xx=30,35,40,50	20	20 Watts 2300 Lumens						
RG22-LED24DMVxx		xx=30,35,40,50	24	24 Watts 2600 Lumens						
RG22-LED28DMVxx		xx=30,35,40,50	28	28 Watts 3000 Lumens						
RG22-LED35DMVxx		xx=30,35,40,50	35	35 Watts 3600 Lumens						
RG22-LED45DMVxx		xx=30, 35,40,50	45	45 Watts 4470 Lumens						
RG24-LED35DMVxx		xx=30,35,40,50	32	32 Watts 3970 Lumens						
RG24-LED45DMVxx		xx=30,35,40,50	35	35 Watts 4345 Lumens						
RG24-LED48DMVxx		xx=30,35,40,50	45	45 Watts 5500 Lumens						
RG24-LED57DMVxx		xx=30,35,40,50	48	48 Watts 5900 Lumens						
			57	57 Watts 6735 Lumens						
			62	62 Watts 7000 Lumens						
			72	72 Watts 8700 Lumens						

*Consult for other wattages
Consult factory for Triac Dimming Options.

**Not DLC listed with this option



Dimensions and specifications subject to change without notice.

800-444-WATT www.mobern.com

8200 Stayton Dr., Ste. 500, Jessup, MD 20794

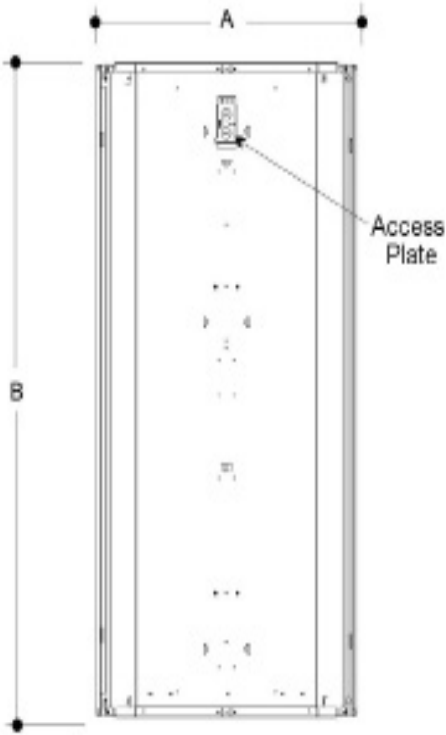
CAT#

JOB NAME

TYPE

DIMENSIONS

TOP VIEWS



MODEL CONFIGURATION

A

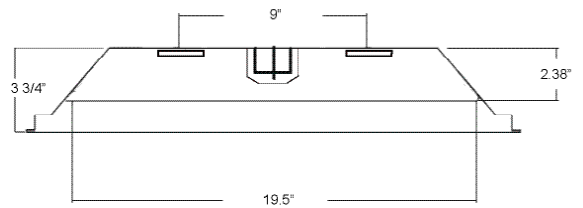
1' x 4'	12"	47 7/8"
2' x 2'	23 3/4"	23 3/4"
2' x 4'	23 3/4"	47 3/4"

SIDE VIEW

B



END VIEW



Dimensions and specifications subject to change without notice.