
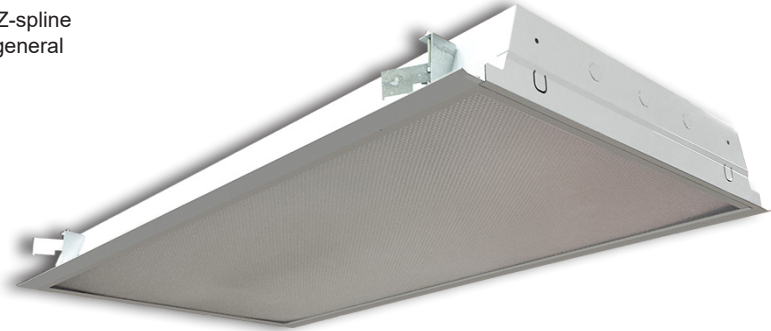


APPLICATIONS

Premium quality flanged troffer suitable for drywall, plaster and Z-spline ceilings. Ideal for commercial and industrial buildings requiring general illumination with flanged configurations.

FEATURES & BENEFITS

- ◆  Technology - Post Powder Paint
- ◆ > 90% reflectivity
- ◆ IC Rated
- ◆ Corrosion and scratch resistant
- ◆ Smooth edges for easy handling
- ◆ Four adjustable Uni-Lugs for easy installation
- ◆ Fixture end flanges are removable for row mounting
- ◆ Joiner channels are included
- ◆ Corner hinging for easy insertion and removal of shielding frame
- ◆ Flush steel lens frame is screw assembled for easy diffuser replacement
- ◆ Housing ends are secured by unique corner interlock and screws
- ◆ Metal to metal light leak protection on all four sides of shielding frame
- ◆ Equipped with Integral Earthquake Clips
- ◆ $c_{ETL_{US}}$ listed for damp locations for up to 67 Watts



SPECIFICATIONS

Housing is die-formed and embossed from cold rolled steel for extra rigidity and strength. Finish is high reflectance P3 - Post Powder Paint. Designed for installation in drywall ceilings. Fixtures are installed from below the ceiling and have overlapping trim flanges. Adjustable Uni-Lugs secure the fixture to the ceiling. Listed by and bears UL label. Listed by and bears **UL** label.

ORDERING DATA

EXAMPLE: RF24LED32DMV35

RF											
Series	Size	Gear	Wattage & Lumens		Driver		Color Temp		Options		
RF	14 1x4	LED	32	32 watts 3450 Lumens	DMV	120-277V Multivolt	30	3000K	Blank	A12 .100 thick lens	
Flanged Troffer	24 2x4		48	48 watts 4800 Lumens		0-10V Dimmable	35	3500K	125	A12 .125 thick lens	
			57	57 watts 5400 Lumens	SDMV	Step dimming Multivolt	40	4000K	156	A19 .156 thick lens	
					DHV	347-480VAC	50	5000K	CL	Clear .100 thick lens	
						0-10V Dimming			CL125	Clear .125 thick lens	
					D347	347VAC			SW	Smooth White .100 thick lens	
						0-10V Dimming			S5	Specular Parabolic Louver (1/2"x1/2"x3/8")	
					TDMV	Triac Dimming 120-277VAC			S7.5	Specular Parabolic Louver (3/4"x3/4"x3/8")	
					D120	Triac Dimming 120VAC			S1.5	Specular Parabolic Louver (1 1/2"x1 1/2"x1")	
					D277	Triac Dimming 277VAC			W5	White Parabolic Louver (1/2"x1/2"x3/8")	
									DD	Drop Dish Lens	
									A78	78 Cell (2x4) or 36 Cell (2x2)	

* Consult factory for 2x2 options

Dimensions and specifications subject to change without notice.



◆ 800-444-WATT ◆ www.mobern.com ◆

8200 Stayton Dr., Ste. 100, Jessup, MD 20794

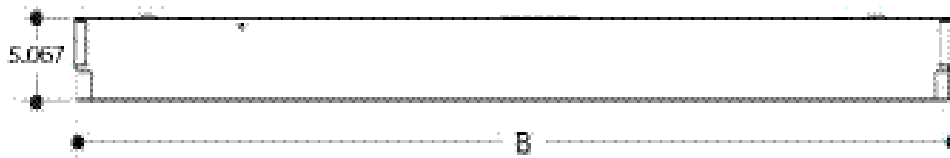
CAT#

JOB NAME

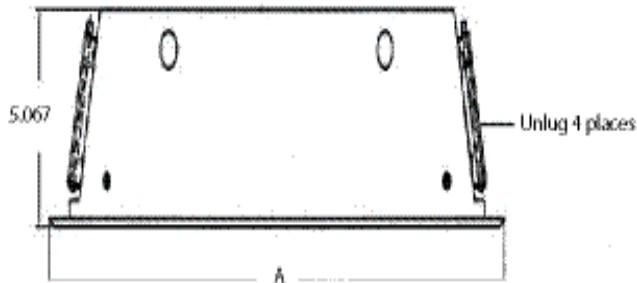
TYPE

DIMENSIONS

SIDE VIEW



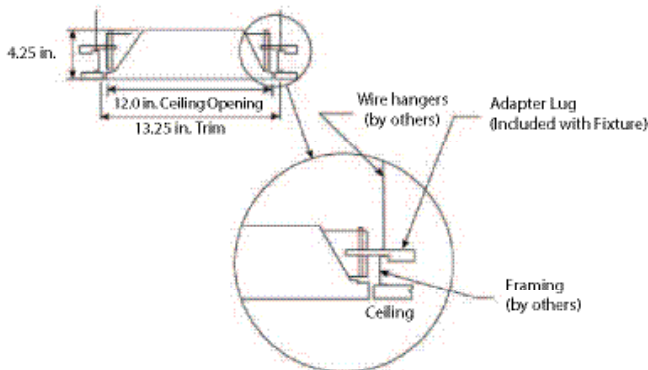
END VIEW



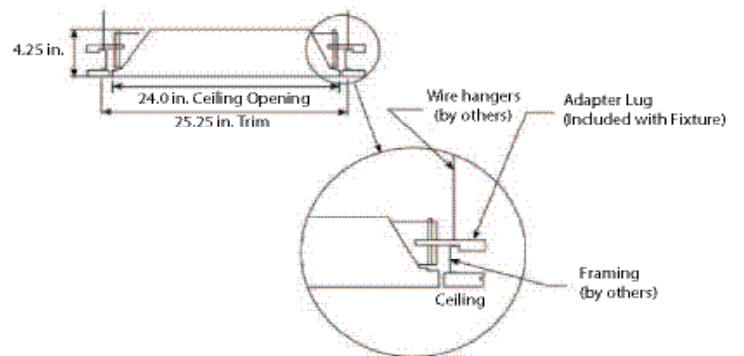
MODEL CONFIGURATION	A	B
1' x 4'	13 1/4"	50 1/2"
2' x 4'	25 5/8"	49 3/4"

ROUGH-IN OPENINGS	A	B
1' x 4'	11 1/4"	48 1/4"
2' x 4'	23 1/4"	48 1/4"

RF1x4 Dimensions



RF2x4 Dimensions



Dimensions and specifications subject to change without notice.



◆ 800-444-WATT ◆ www.mobern.com ◆
8200 Stayton Dr., Ste. 100, Jessup, MD 20794

CAT#

JOB NAME

TYPE