

### APPLICATIONS

This premium quality recessed architectural volumetric is available with 4 different unique diffusers. The different designs reflect popular themes in architectural design trends, allowing these luminaires to have versatility across a variety of commercial spaces. Ideal applications include all commercial and industrial buildings requiring general illumination with reversed configuration.

### FEATURES & BENEFITS

- ◆ Min CRI 82
- ◆ L70 >60,000 hrs
- ◆ IC Rated
- ◆ Corrosion and scratch resistant
- ◆ Smooth edges for easy handling
- ◆ Ends are secured by snap-in interlocking system
- ◆ Exclusive "Light Lock" frame reduces light leaks
- ◆ Flush steel door with rotary action cam latches and hinges from either side
- ◆ Easy access plate for quick wiring
- ◆ Equipped with Integral Earthquake Clips
- ◆ <sub>C</sub>ETL<sub>US</sub> listed for damp locations up to 95 watts



### SPECIFICATIONS

Housing is die-formed and embossed from cold rolled steel. Wiring access plate and knockouts are provided on back of housing allowing for flexible greenfield attachment. Driver cover snaps easily into place eliminating the need for tools when accessing the driver. Acrylic lens is held within a hinged steel frame door. The heavy gauge door frame hinges downward on either side and is held in the closed position by two positive cam latches. Knockouts are provided on ends for continuous wiring.

### ORDERING DATA

EXAMPLE: RAVA22-LED35DMV40

RAV										
Series	Size	Gear	Wattage & Lumens			Driver	Color Temp			
RAV Recessed Architectural Volumetric	22	2x2	LED			DMV	120-277VAC	30	3000K	<b>Options</b> EM 12W, 1300 lumen, battery backup EM5 5W, 650 lumen, battery backup EM7 7W, 900 lumen, battery backup G3 Triple Gasketing FA Flush Aluminum WP 6FT 3 wire whip SSM Microwave Sensor
	24	2x4	LED			SDMV	0-10V Dimming	35	3500K	
							Step dimming	40	4000K	
							Multivolt	50	5000K	
						D347V	347VAC			
							0-10V Dimming			
						D120	Triac Dimming			
							120VAC			
						D277	Triac Dimming			
							277VAC			
<b>Lens</b>										
A	Curved Ribbed Center Troffer									
B	Curved Body Troffer									
C	Flat Center Troffer									
D	Concave Body Troffer									
		<b>Standard 2x2</b>								
		20	20 Watts	2300 Lumens						
		24	24 Watts	2600 Lumens						
		28	28 Watts	3000 Lumens						
		35	35 Watts	3600 Lumens						
		45	45 Watts	4470 Lumens						
		<b>Standard 2x4</b>								
		32	32 Watts	3970 Lumens						
		35	35 Watts	4345 Lumens						
		45	45 Watts	5500 Lumens						
		48	48 Watts	5900 Lumens						
		57	57 Watts	6735 Lumens						
		62	62 Watts	7000 Lumens						
		72	72 Watts	8700 Lumens						

\*Consult for other wattages  
Consult factory for Triac Dimming Options.



Dimensions and specifications subject to change without notice.

◆ 800-444-WATT ◆ www.mobern.com ◆  
8200 Stayton Dr., Ste. 500, Jessup, MD 20794

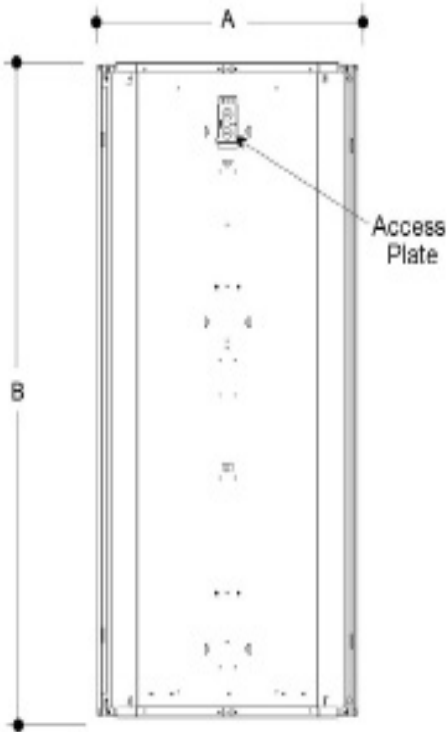
CAT#

JOB NAME

TYPE

**DIMENSIONS**

**TOP VIEWS**



**MODEL CONFIGURATION**

**A**

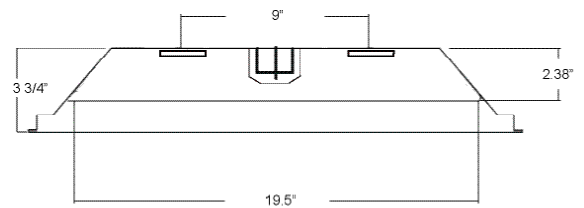
<b>2' x 2'</b>	23 3/4"	23 3/4"
<b>2' x 4'</b>	23 3/4"	47 3/4"

**SIDE VIEW**

**B**



**END VIEW**



Dimensions and specifications subject to change without notice.

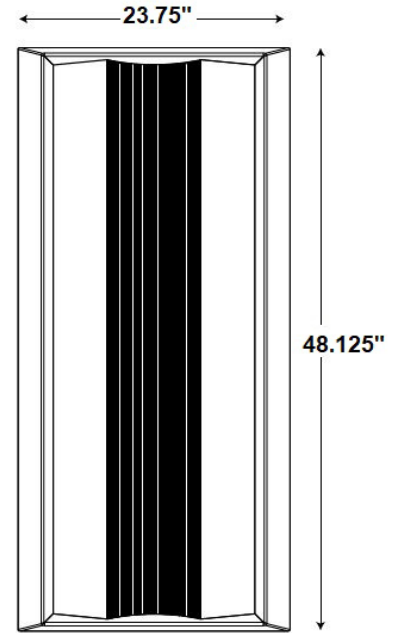
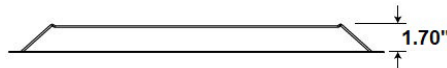
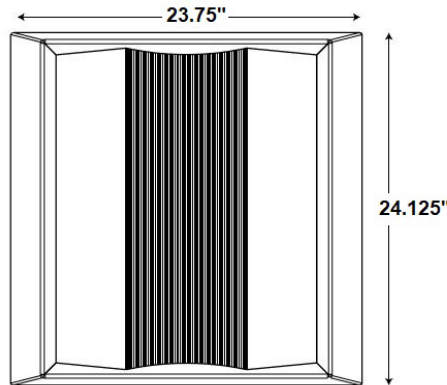
◆ 800-444-WATT ◆ www.mobern.com ◆  
8200 Stayton Dr., Ste. 500, Jessup, MD 20794

CAT#

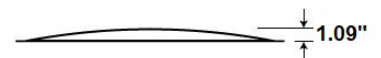
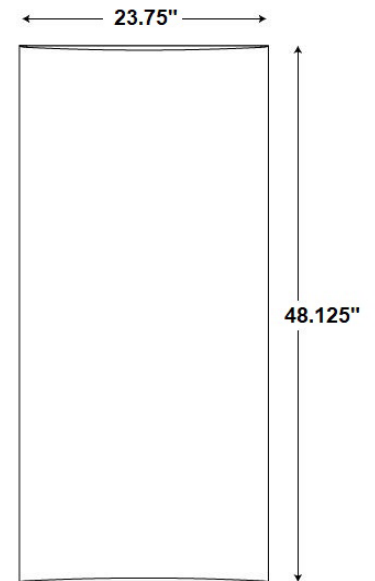
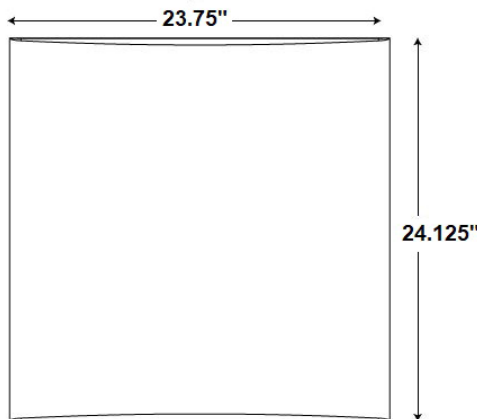
JOB NAME

TYPE

**A-Curved Ribbed Center Troffer**



**B-Curved Body Troffer**

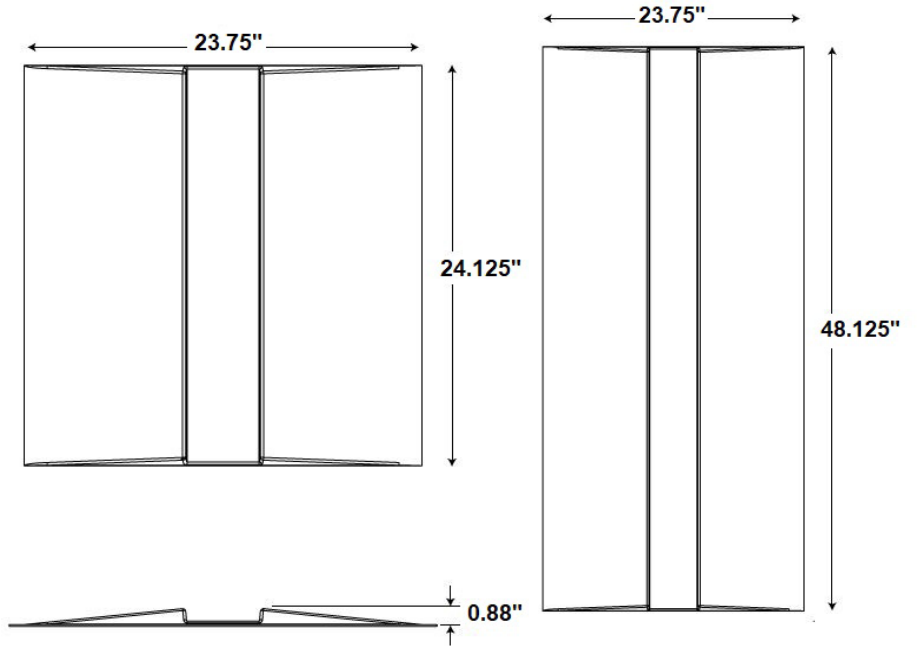


Dimensions and specifications subject to change without notice.

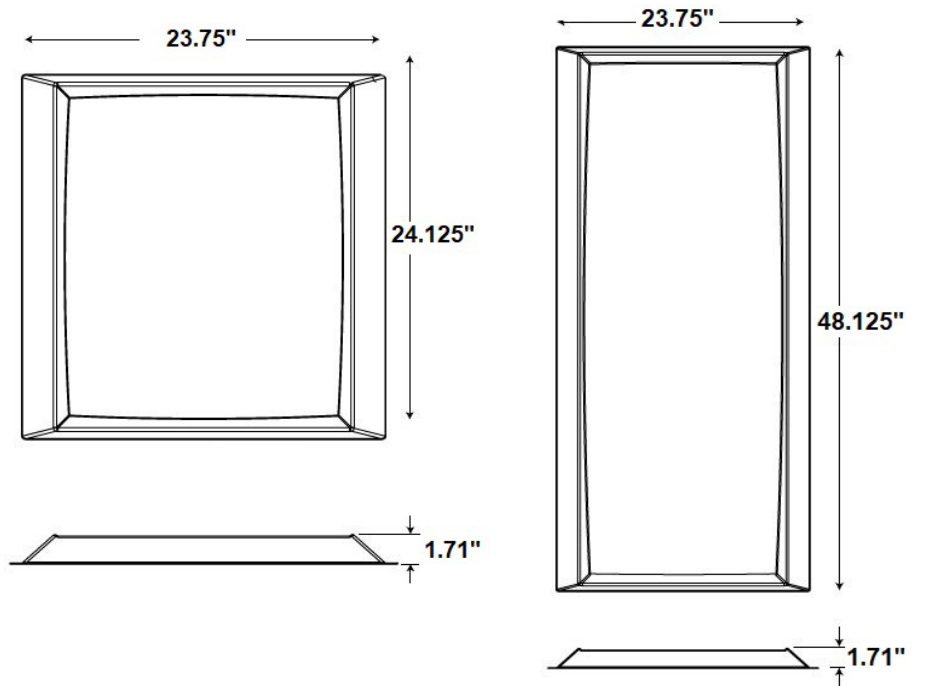
◆ 800-444-WATT ◆ www.mobern.com ◆  
8200 Stayton Dr., Ste. 500, Jessup, MD 20794

CAT#	
JOB NAME	
TYPE	

**C- Flat Center Troffer**



**D- Concave Body Troffer**



Dimensions and specifications subject to change without notice.



◆ 800-444-WATT ◆ www.mobern.com ◆

8200 Stayton Dr., Ste. 500, Jessup, MD 20794

CAT#	
JOB NAME	
TYPE	