

APPLICATIONS

A linear wall wash fixture for distinctive architectural lighting plans. Ideal for lobbies, bathroom and office areas. MW4A Series fixtures can be installed individually or in continuous runs.

FEATURES & BENEFITS

- ◆ Die-formed and welded 22-gauge cold rolled steel
- ◆ Knockouts on ends allow continuous wireway mounting
- ◆ Fixture accepts various lenses or louvers (sold separately) 4' and 8' units have a steel mullion to join two individual diffusers
- ◆ Fixtures can be semi-recessed, surface mounted to the ceiling, or pendant hung by stem or cable
- ◆ IC Rated
- ◆ cETL_{us} Listed



SPECIFICATIONS

Die-formed and welded 22 gauge cold rolled steel. Knockouts on ends allow continuous wireway mounting. A 1/2" regressed flange at the bottom insures uniformity and rigidity. The housing provides uniform ambient upright for ceiling illumination.

ORDERING DATA

EXAMPLE: MW4ARSF24LED12DMVBK30

MW4A		SF		LED		Driver		Finish		Color Temp		Configuration	
Series	Mounting	Length	Gear	Driver	Finish	Color Temp	Configuration	Options					
MW4A Linear Wall Wash Fixture	R Recess Mount S Surface Mount	24 24" 48 48" 96 96"	LED	DMV 120-277V Multivolt 0-10V Dimmable SDMV Step dimming Multivolt DHV 347-480VAC 0-10V Dimming D347V 347VAC 0-10V Dimming D120 Triac Dimming 120VAC D277 Triac Dimming 277VAC	BK Black SI Silver WH White	30 3000K 35 3500K 40 4000K 50 5000K	Blank Individual -B Beginner Run -E Ender Run -J Joiner Run	Continuous Run Wiring Options PI1 3 wire harness, including white black, and green (normally for non-dim applications) PI2 4 wire harness, including white, black, green, and blue for emergency battery backup (normally for emergency circuit) PI3D 5 wire harness, including white, black, green, violet, and gray (normally for 0-10V dimming) PI4D 6 wire harness (normally for 0-10V dimming and emergency)					
	Lens SF Snap-in Frosted Acrylic Lens (85% transmission)	Wattage / Lumens											
		2ft.											
		12 12 Watts 1200 Lumens 24 24 Watts 2400 Lumens 4ft.											
		24 24 Watts 2400 Lumens 48 48 Watts 4800 Lumens 8ft.											
		48 48 Watts 4800 Lumens 96 96 Watts 9600 Lumens											

Dimensions and specifications subject to change without notice.



◆ 800-444-WATT ◆ www.mobern.com ◆
8200 Stayton Dr., Ste. 500, Jessup, MD 20794

CAT#	
JOB NAME	
TYPE	

DIMENSIONS

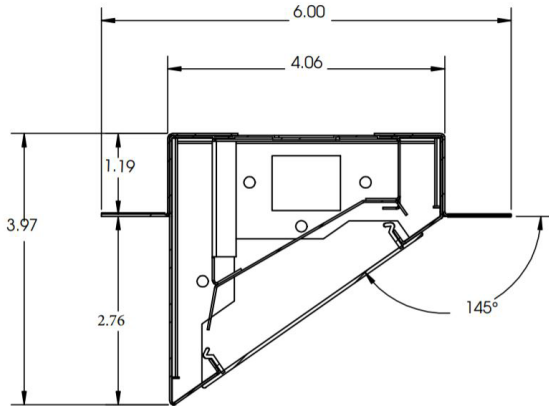
SIZE: W x L x H in inches

2ft. - 4" x 24" x 4"

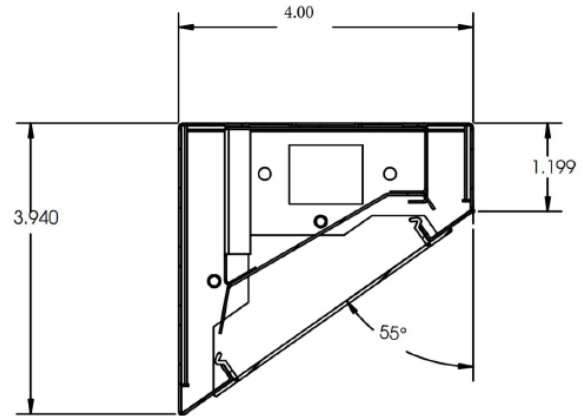
4ft. - 4" x 48" x 4"

8ft. - 4" x 96" x 4"

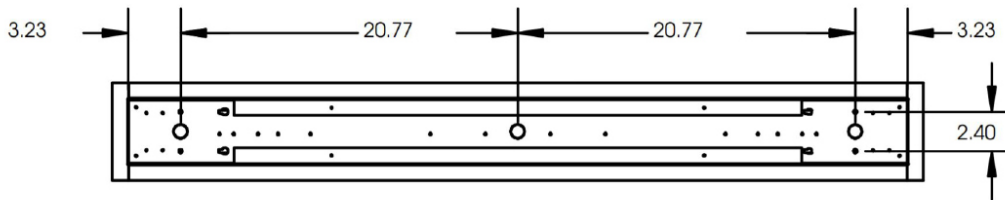
Recess Mounted



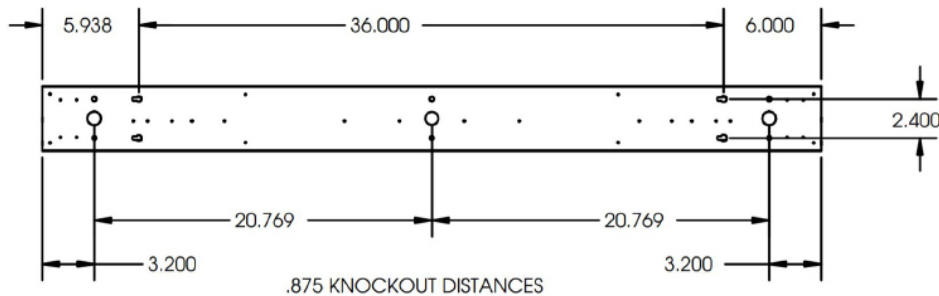
Surface Mounted



4ft. Recess Mounted



4ft. Surface Mounted



Dimensions and specifications subject to change without notice.

