

APPLICATIONS

This High Output Multi-Function LED strip offers a family of three different strips to meet a variety of applications in warehouses, retail and utility areas. Available in a cost effective and high output open strip version, a specially designed LED frosted lens version, and a narrow focused reflector version. Each version is ideal for different applications and together make a perfect family of products for many industrial and back of house commercial applications. These fixtures can be surface or pendant mounted. Driver box hinges open for easy access to the driver without removing the lens or reflector. Consult for different finishes and different sizes.

FEATURES & BENEFITS

- ◆ Five years warranty
- ◆ L₇₀ > 50000 hrs.
- ◆ Min CRI 80
- ◆ Surface mount, chain hung, double stem
- ◆ Size: 48"L x 2.925"W x 1.778"H
- ◆ cETL_{US} Listed

SPECIFICATIONS

Housing is die-formed and embossed code 22 gauge steel. Finish is high reflectance baked white enamel. Wiring knockouts are provided on back and end of housing. Ballast cover, reflector or lens attach without tools with hinged construction to simplify ballast access.



Narrow Reflector



Open Strip



Frosted Lens

ORDERING DATA

EXAMPLE: MRRS48-LED48DMVWH40

MRRS		LED		Reflector		Driver		Finish		Color Temp		Options	
Series	Length	Gear	Wattage and Lumen		Blank	No Reflector	DMV	WH	30	3000K	EM	Emergency	
MRRS	48 48"	LED	48"		XWN	White Narrow Reflector*	120-277V Multivolt	White	35	3500K	Battery		
LED Strip	96 96"		96"				0-10V Dimmable	Brushed	40	4000K			
			57"				Step dimming	Nickel	50	5000K			
			57"				Multivolt	Black					
			96"				347-480VAC	BZ					
			57"				0-10V Dimming						
			96"				347VAC						
			57"				0-10V Dimming						
			96"				120-277VAC						
			114"				Triac Dimming						
							120VAC						
							277VAC						

ACCESSORIES

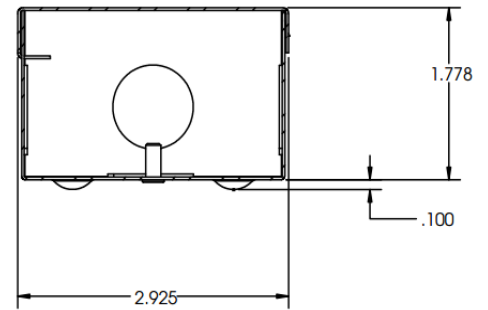
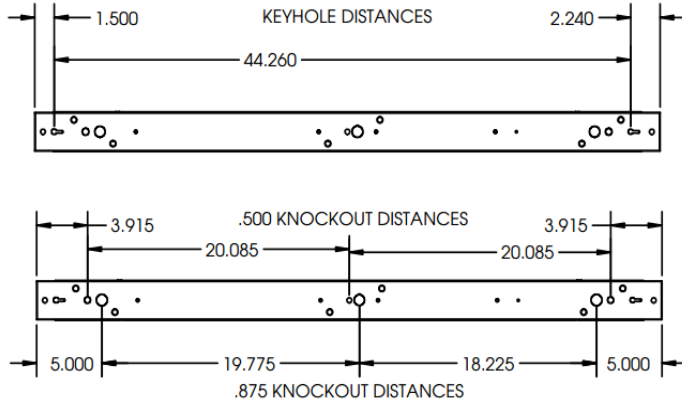
- A-HC301WH** Cable kit with 4 cable + power feed cable incl. with white canopy
- A-HC302WH** Cable kit with 12' cable + power feed cable incl. with white canopy
- A-HC3015WWH** Cable kit with 4' cable + power feed 0-10V dimming cable included with white canopy (5 wire)
- A-HC3025WWH** Cable kit with 12' cable + power feed 0-10V dimming. Cable included with white canopy (5 wire)
- A-2SCS24WH** Two Stem kits with 24" Stem, Canopy and Mounting hardware for a 4' fixture
- AC120- TOGGLE-2PK** Aircraft cable & toggle set - 10ft

Dimensions and specifications subject to change without notice.

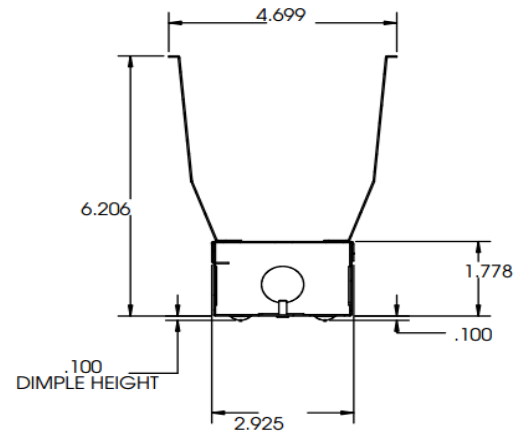
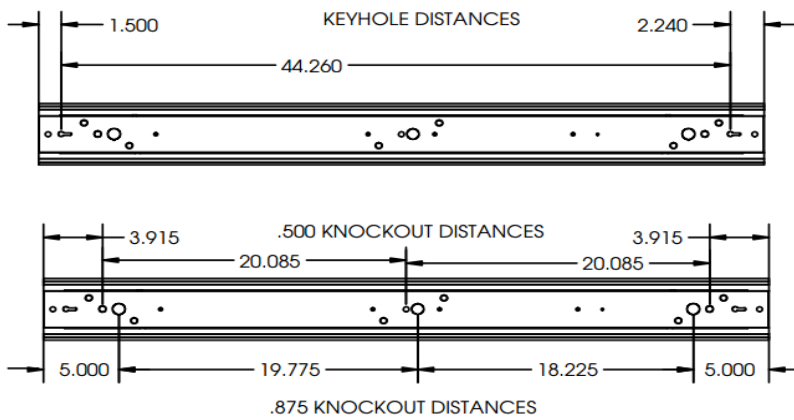


DIMENSIONS

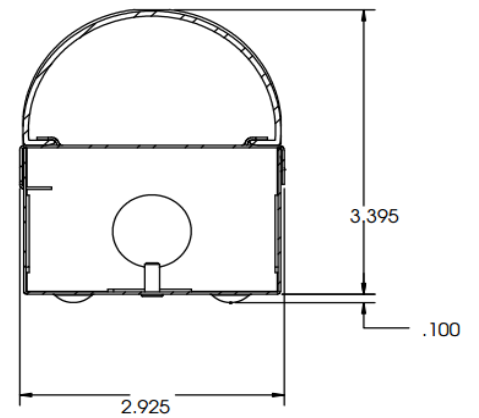
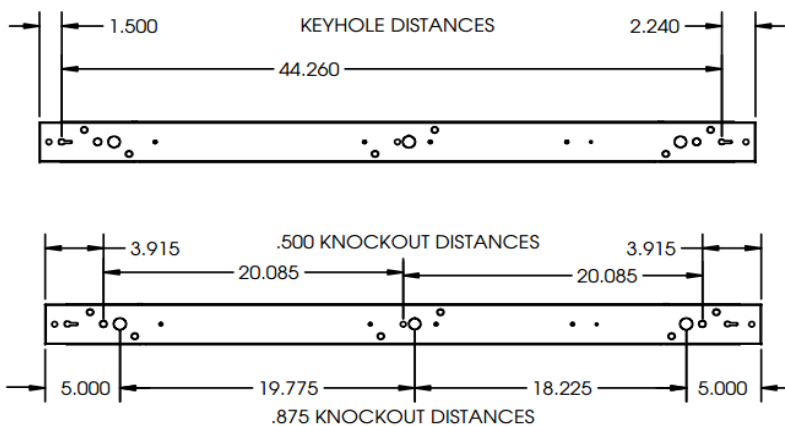
Open Strip



Reflector



Lens



Dimensions and specifications subject to change without notice.

