

### FEATURES & BENEFITS

- ◆ Fade and rust resistant composite construction
- ◆ Operating temperature -40°C to +40°C
- ◆ Available in black, white, or bronze
- ◆ Post top fits most 3 inch diameter posts (not included)
- ◆ Optional photocell for wall mount 120V only
- ◆ L<sub>70</sub> > 50,000 hrs.
- ◆ 5 year warranty
- ◆ cUL<sub>US</sub> listed for wet locations



Post Top



Large Wall Mount



Small Wall Mount

### ORDERING DATA

EXAMPLE: MHIP-LED13D120WHCL40

MHI	LED	13	D120				
<b>Series</b> MHI	<b>Gear</b> LED	<b>Wattage / Lumens</b> 13 13 Watts 1280 Lumens	<b>Driver</b> D120 120V Triac Dimmable	<b>Finish</b> WH White BK Black BZ Bronze	<b>Lens</b> CL Clear FR Frosted	<b>Color Temp</b> 30 3000K 40 4000K	<b>Options</b> PC Photocell (Wall Mount Only)
<b>Mount</b>							
P	Post Top						
W	Wall Mount						
L	Large Wall Mount						

### ORDERING DATA FOR LED A LAMP

EXAMPLE: MHIPINCLEDDWHCL40

MHI	INC	LED				
<b>Series</b> MHI	<b>Socket</b> INC Incandescent	<b>Lamp Type (Optional)<sup>1</sup></b> LED 9.5 watt A19/E26 120VAC 800 Lamp Lumens Triac Dimmable (60W MAX)	<b>Finish</b> WH White BK Black BZ Bronze	<b>Lens</b> CL Clear FR Frosted	<b>Color Temp (Optional)<sup>2</sup></b> 30 3000K 40 4000K	<b>Options</b> PC Photocell (Wall Mount Only)
<b>Mount</b>						
P	Post Top					
W	Wall Mount					
L	Large Wall Mount					

<sup>1</sup>Must include color temperature

<sup>2</sup>Must include LED Lamp Type

Dimensions and specifications subject to change without notice.



◆ 800-444-WATT ◆ www.mobern.com ◆

8200 Stayton Dr., Ste. 500, Jessup, MD 20794

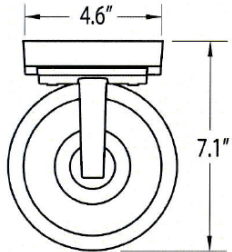
CAT#

JOB NAME

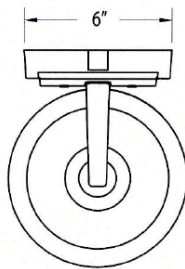
TYPE

**DIMENSIONS**

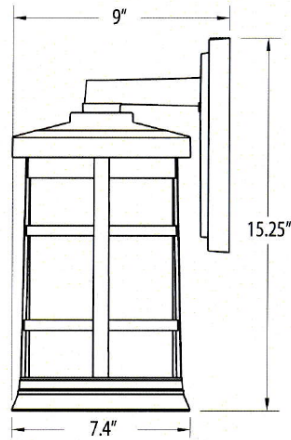
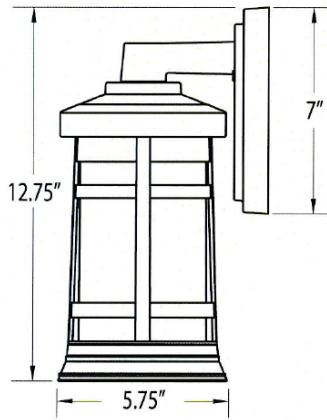
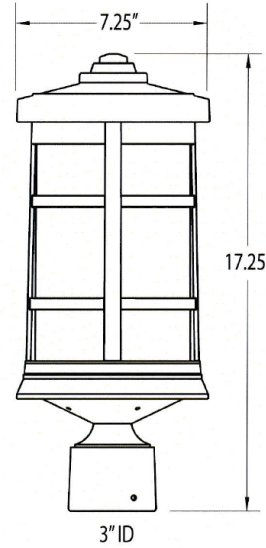
**Small Wall Mount**



**Large Wall Mount**



**Post Top**



Dimensions and specifications subject to change without notice.

