

### APPLICATIONS

4" flat frame-in kits combined with LED module and integral reflector. This is designed for use in non-insulated ceiling. Insulation material must be kept a minimum of 3" from fixture. Provided in high efficacy LED with dimmable driver and the special optical diffuser allows high lumen transmission and light uniformity.

### FEATURES & BENEFITS

#### Mounting Frame

- ◆ Galvanized steel construction
- ◆ Housing adjusts for ceilings up to 1 1/4" thick

#### LED Module & Trim

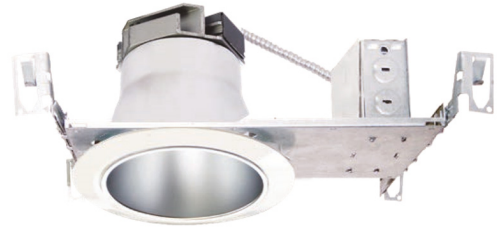
- ◆ Aluminum extruded heat sink designed to facilitate heat dissipation to reduce LED junction temperature for maintaining constant light output, color and life of solid state components
- ◆ Modular construction includes LED, heat sink and lens
- ◆ Heavy gauge aluminum reflector anodized in clear haze, gold, or white finish. Reflectors may be provided with black or white milled groove baffle collar.

#### Bar Hangers

- ◆ 24" bar hangers provide stability and support on joists and T-bar grid ceilings.
- ◆ Housing can be positioned at any point within 24" joist span.
- ◆ Score lines allow "toolless" shortening for 12" joists

#### LED Power Supply Driver

- ◆ 120-277V input high efficiency drivers with the ability to dim by 1) Triac 120V low voltage electronic dimmer switches 2) 0-10V dimmer switches
- ◆ Driver feature power factor >.90, THD <20% and has integral thermal protection to sense over temperature or electrical issues
- ◆ Driver mounts externally to the module, allowing future replacement, if needed.
- ◆ Consult with factory for optional 0~10V analog dimmable driver.



#### Junction Box

- ◆ Listed for through branch circuit wiring. (Max. 8 No 12 AWG 90°C branch circuit conductors, (4 in, 4 out)
- ◆ (5) 1/2" knockouts with true pry-out slots and (4) knockouts with Romex cable clamp
- ◆ Ground wire provided on J-box

#### Options

- ◆ Emergency battery backup: Available mounted to fixture or remote adjacent to luminaire (consult with factory for exact application)

#### Warranty

- ◆ LED module 5 years
- ◆ Driver 3 years

#### Listing

- ◆ cETL<sub>us</sub> Listed Wet Location
- ◆ State of California Title 24.
- ◆ Energy Star Approved & Listed



\*Provided: Easy-quick connector case (patent pending)

### HOUSING ORDERING DATA

### EXAMPLE: MDLEDH-CFK41430UTD

MDLEDH-CFK4

Series	Wattage / Lumens		CRI		Color Temp		Driver		Options
MDLEDH-CFK4	14	14 Watts	950 Lumens	8	80 CRI	27	2700K	UTD	EM Emergency battery backup
	23	23 Watts	1740 Lumens	9	90 CRI	30	3000K		
						35	3500K	UZTD	
						40	4000K		
									120-277V Triac Dimming (std)
									120-277V 0-10V Dimming

#### 120V Triac Approved Dimmers

\*Lutron: NovaT (Ntelv 300 & 600 Diva (Dvelv-300P & 303P)

\*Leviton: Acenti: Ate06-1Lw

\*Leviton Trimatron #705W (incandescent)

#### 0-10V Approved Dimmers

\*Lutron: Nova® 0-10V:NTFTV Diva® 0-10V: DVTV

\*Leviton: Decora 0-10V: IP710DL

#### Consult factory

for additional dimmers

Dimensions and specifications subject to change without notice.



CAT#			
JOB NAME		TYPE	

**TRIMS** \*Wide beam reflector is standard. Also available in narrow beam in reflector. (Consult w/factory)

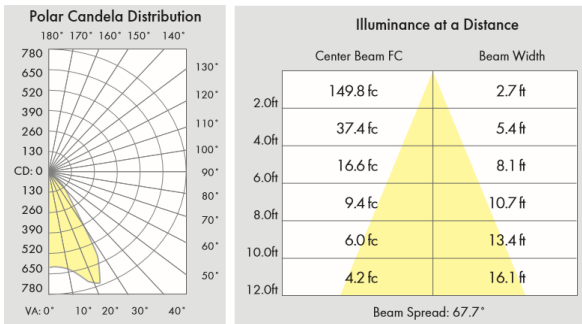


### TRIM ORDERING DATA

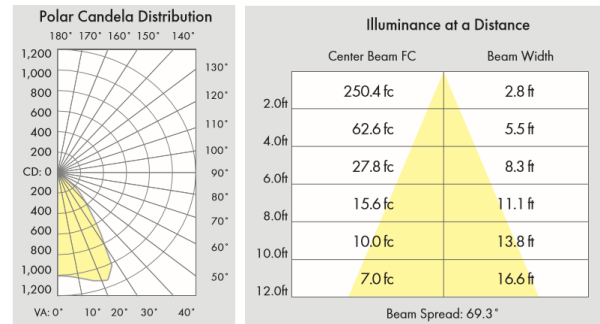
### EXAMPLE: MDLEDT-R44HC

Trim	Reflector Finish*	Baffle Finish**	Metal Ring Finish
MDLEDT-R44	HC Haze Clear	WH White	Blank White Plastic Ring (std)
MDLEDT-R414	WH White Painted	BK Black	WH White Metal Ring
MDLEDT-R441			SN Satin Nickel
MDLEDT-R422	*Consult with factory for custom finishes	**LEDT-R414 & R441 only	CH Chrome
MDLEDT-R436			SF Polished Self Flange (For open and wall wash reflectors only)
MDLEDT-R440			

### PHOTOMETRIC REPORT

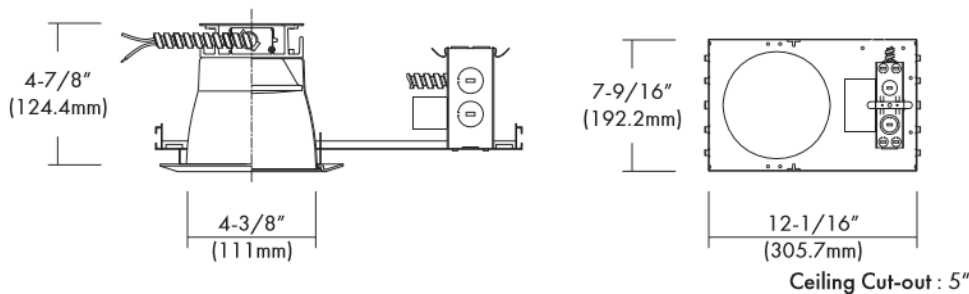


MDLEDH-CFK4-14-830+MDLEDT-R44



MDLEDH-CFK4-23-830+MDLEDT-R44

### DIMENSIONS



Dimensions and specifications subject to change without notice.



CAT#			
JOB NAME		TYPE	