

APPLICATIONS

This strip light is mainly for commercial use. It can be used in commercial, retail, and institutional applications including gymnasiums, factories, and warehouses.

FEATURES & BENEFITS

- ◆ Ambient operating temperature -40°C to 40°C (-40°F to 104°F)
- ◆ L₇₀ > 50000 hrs
- ◆ Optional sensor and emergency battery backup
- ◆ Surface or chain mountable
- ◆ Comparable to T8 or T5HO
- ◆ 5 year warranty
- ◆ cUL_{us} listed for damp locations



ORDERING DATA

EXAMPLE: LSBR48-LED30DMV40

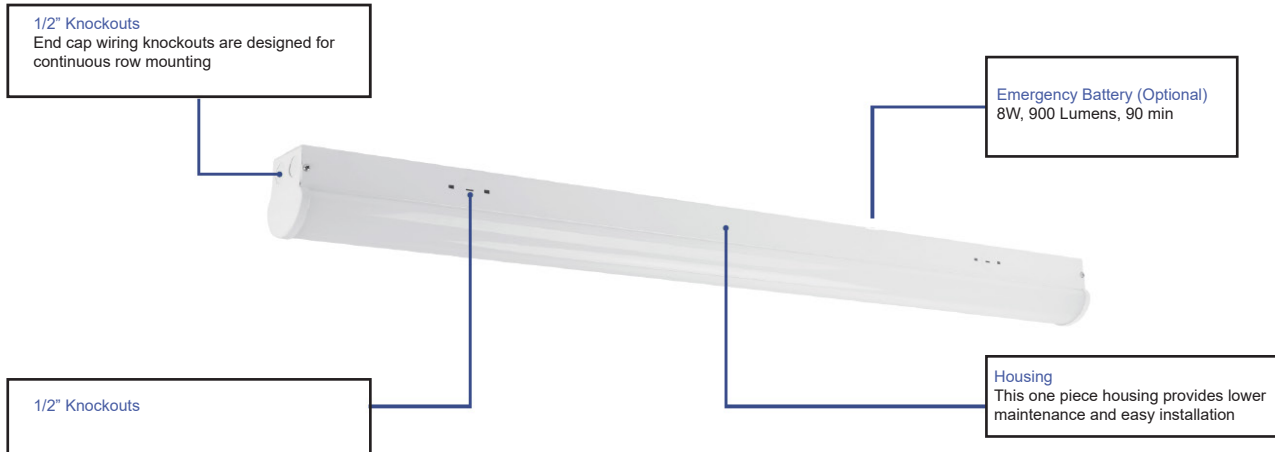
LSBR						
Series	Size	Gear	Wattage / Lumens*	Driver Type	Color Temp	Options
LSBR	48 48" 96 96"	LED	48 inch 23 23 Watts 3000 Lumens 30 30 Watts 4000 Lumens** 35 35 Watts 4650 Lumens 45 45 Watts 6000 Lumens 96 inch 46 46 Watts 6050 Lumens 60 60 Watts 8000 Lumens** 65 65 Watts 8700 Lumens 80 80 Watts 10500 Lumens**	DMV 120-277VAC 0-10V Dimmable	40 4000K 50 5000K	EM Emergency Battery Backup OS Occupancy Sensor

*Lumens at 4000K
**Subject to availability

ACCESSORIES

- A42 Wire guard (4 clips included)
- A42W White wire guard (4 clips included)
- A349 Replacement clips (QTY 4)

Back View



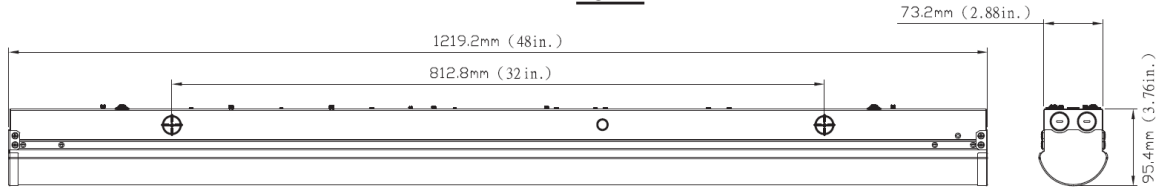
Dimensions and specifications subject to change without notice.



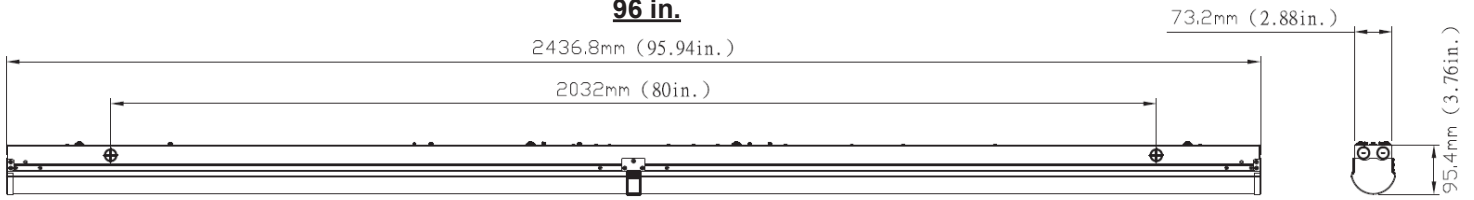
CAT#			
JOB NAME		TYPE	

DIMENSIONS

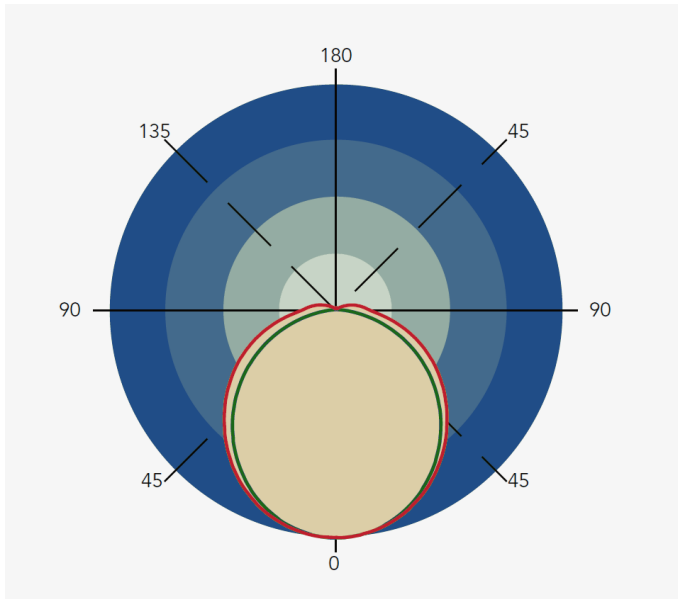
48 in.



96 in.



PHOTOMETRIC DATA



Dimensions and specifications subject to change without notice.



◆ 800-444-WATT ◆ www.mobern.com ◆
8200 Stayton Dr., Ste. 500, Jessup, MD 20794

CAT#			
JOB NAME		TYPE	