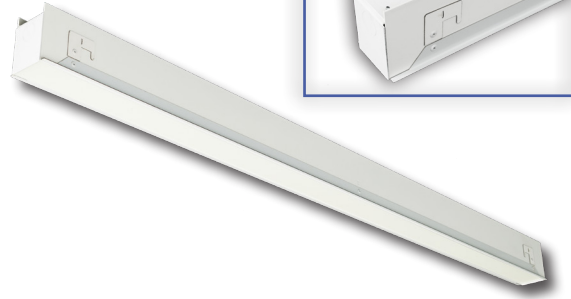


### APPLICATIONS

A linear 2x3 fixture for distinctive architectural lighting plans. Ideal for corridors, lobbies and office areas, 2x3 Series fixtures can be installed individually or in a continuous run. Specifically designed for direct lighting with snap-in lens to hide the LED arrays. Ideal where downlight and uplight are required.



### FEATURES & BENEFITS

- ◆ Available in custom finishes (consult factory)
- ◆ IC Rated
- ◆ cETL<sub>US</sub> listed for damp locations up to 90 watts
- ◆ L<sub>70</sub> > 50000 hrs.
- ◆ Min CRI 80
- ◆ 5 year warranty

### ORDERING DATA

EXAMPLE: L23R48-LED38DMVWH40

L23R		SF		LED					
<b>Series</b>		<b>Length<sup>1</sup></b>		<b>Gear</b>		<b>Wattage &amp; Lumens</b>		<b>Finish<sup>2</sup> Color Temp</b>	
<b>L23R</b> Recess Mount For 1" T-Bar Grid Ceiling		48 47.45 inch 96 95.45 inch		<b>LED</b>		<b>24 in.</b> 13 13 Watts 1300 Lumens 19 19 Watts 1900 Lumens 23 23 Watts 2300 Lumens <b>48 in.</b> 26 26 Watts 2600 Lumens 38 38 Watts 3800 Lumens 45 45 Watts 4500 Lumens <b>96 in.</b> 52 52 Watts 5200 Lumens 76 76 Watts 7600 Lumens 90 90 Watts 9000 Lumens		<b>WH</b> White 30 3000K <b>BK</b> Black 35 3500K <b>SI</b> Silver 40 4000K 50 5000K	
		<b>Lens Material</b>						<b>Driver &amp; Voltage</b>	
		SF Snap-in frosted acrylic lens						<b>DMV</b> 120-277V Multivolt 0-10V Dimmable <b>SDMV</b> Step dimming Multivolt <b>D347V</b> 347VAC 0-10V Dimming <b>D120</b> Triac Dimming 120VAC <b>D277</b> Triac Dimming 277VAC	
								<b>Options</b>	
								<b>Plug in Options</b>	
								<b>P11</b> 3 wire harness, including white, black and green <b>P12</b> 4 wire harness, including white, black, green and blue for emergency backup <b>P13D</b> 5 wire harness, including white, black, green, violet and gray	

### Notes:

<sup>1</sup>Consult for other lengths.

<sup>2</sup>Consult for custom finish options

<sup>3</sup>See L23P-L23S-L23W-LED and L23RR-L23RF-L23RPF-LED spec sheet for matching pendant, surface, wall mount, and flanged recessed fixtures.



Dimensions and specifications subject to change without notice.

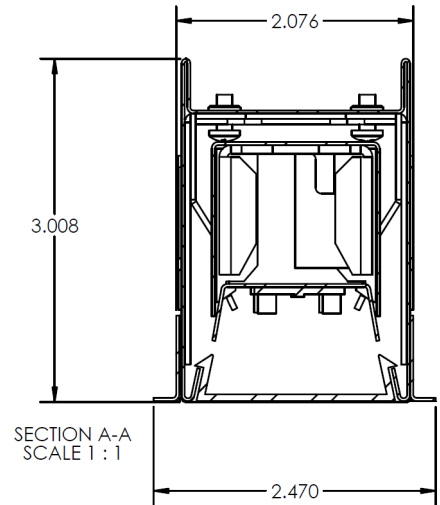
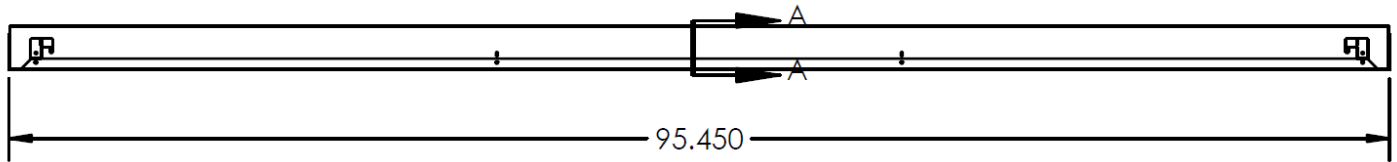
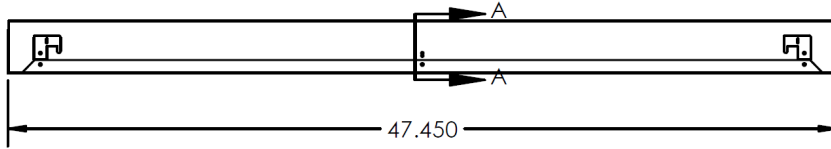
◆ 800-444-WATT ◆ www.mobern.com ◆  
8200 Stayton Dr., Ste. 500, Jessup, MD 20794

CAT#	
JOB NAME	TYPE

#### DIMENSIONS

**Dimensions In Inches**

- 24 in.**  
2"W x 24"L x 3"H
- 48 in.**  
2"W x 47.45"L x 3"H
- 96 in.**  
2"W x 95.45"L x 3"H



Dimensions and specifications subject to change without notice.

◆ 800-444-WATT ◆ [www.mobern.com](http://www.mobern.com) ◆

8200 Stayton Dr., Ste. 500, Jessup, MD 20794

CAT#

JOB NAME

TYPE