

APPLICATIONS

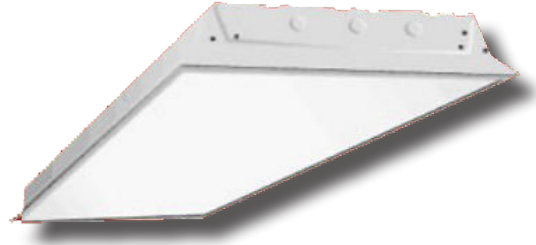
For high light output applications requiring a lensed enclosure for recessed or pendant mounting, the FHBG is an efficient choice, utilizing a troffer body modified with a reflector for enhanced output and light control and remoting the ballast above the body. Rugged steel body with hinged and latched door frame for lens options. Ballast housing above body provides cooler operation for longer life. This fixture is not designed to be surface mounted on ceiling or wall

SIZE W x L x H in inches (mm)

23.75W x 47.75L x 6.0H (605 x 1215 x 155)

FEATURES & BENEFITS

- ◆ 4 or 6 T8, T5HO or T5 lamp positions
- ◆ 4 point chain mount (101HC accessory available)
- ◆ Recessed grid - no accessories required
- ◆ Baked white enamel code gauge steel
- ◆ Premium full specular
- ◆ White enamel door frame, optional lens materials
- ◆ Rear mounted ballast enclosure, aluminum



ORDERING DATA

EXAMPLE: FHBG-432120

FHBG

Series	Lamp Count	Reflector	Lamp Type	Ballast Type	Lens Material
FHBG Fluorescent HiBay Grid Mount, Hinged & Latched Door Frame	4 6 (Lamps not included)	Blank Full Specular (Mirrored)	32 48 in. T8 54 46 in T5HO	120 120 Volt 277 277 Volt MV Multivolt H120 Electronic, 120V HiLume H277 Electronic, 277V HiLume HMV Electronic, MV HiLume	(Blank) No Lens A Prismatic Acrylic #12 Pattern 0.100 A125 Prismatic Acrylic #12 Pattern 1/8" A19 0.156 A19 Prismatic CL 0.100 Clear Acrylic CL125 0.125 Clear Acrylic

Performance Levels

Ballast			
Manufacturer	Standard - Leave blank if no preference	High Efficiency Instant Start	High Efficiency Program Start
Advance (A)	Centium ICN (A)	Optanium (AL, AN, AH)	Optanium PS (APL, APN ???)
GE (G)	Proline GE (G)	UltraMax (GL, GN, GH)	UltraStart (GPL, GPH, GPH)
Osram/Sylvania (S)	Quicktronic Pro (S)	Quicktronic QHE (SL, SN, SH)	ProStart (SPL, SPN, SPH)
Universal (U)	ULT STD Electronic (U)	HP Electronic (UL, UN, UH)	AccuStart (UPI, UPN, UPH)

Brands

Code No.	Description
A	Advance
G	GE Ballast
L	Lutron
S	Sylvania Ballast
U	Universal

Options

- B1** T8/T5 1L 500 Lumens Battery Backup (B11)
- B2** T8/T5 1L/2L 700 Lumens Battery Backup (B48)
- B3** T8/T5 1L/2L 1400 Lumens Battery Backup (B223)
- B51** T5HO 1L 500 Lumens Battery Backup (B625)
- B52** T5HO 1L 800 Lumens Battery Backup (B585)
- B53** T5HO 1L 1300 Lumens Battery Backup (B626)
- 11** Dual Ballasts 1 Lamp + 1 Lamp
- 21** Dual Ballasts 2 Lamp + 1 Lamp
- 22** Dual Ballasts 2 Lamp + 2 Lamp
- 31** Dual Ballasts 3 Lamp + 1 Lamp
- L41** 741K Lamps Installed
- L35** 735K Lamps Installed
- L841** 841K Lamps Installed
- L835** 835K Lamps Installed
- RIF** Radio Interference Filter
- WG** Wire guard

Note: 0.100 NOT recommended for 454, 654 or 632

*Cord & Whip Ordering Chart (Add to End of Fixture Part Number)

Part No.	# of Wires	Length	End Fitting	Finish	Voltage	Amps (TL Only)
WP - Whip CS - Cordset	(Blank) 3 Wire 4 - 4 Wire 5 - 5 Wire 6 - 6 Wire	(Blank) 6 feet 8 - 8 feet 10 - 10 feet 12 - 12 feet 15 - 15 feet	(Blank) No Plug P* - Standard Plug TL* - Twist Lock	BK - Black WH - White	(Blank) 120-277V 120 - 120V 277 - 277V 347 - 347V 480 - 480V	15 - 15 Amps 20 - 20 Amps

*See chart below for whip & cord ordering options

Dimensions and specifications subject to change without notice.



◆ 800-444-WATT ◆ www.mobern.com ◆

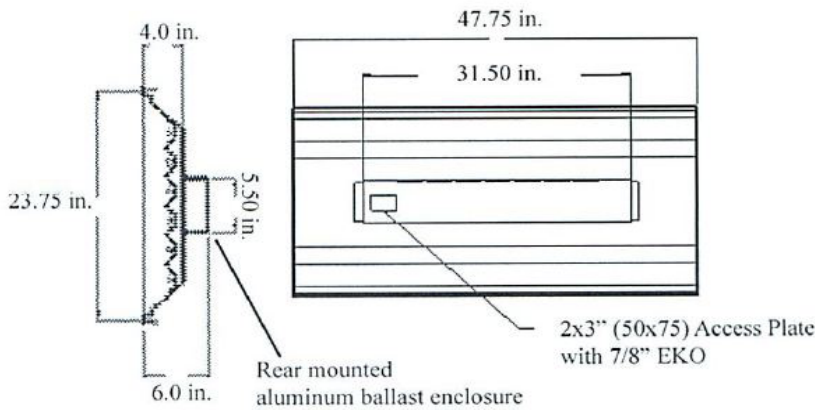
8200 Stayton Dr., Ste. 500, Jessup, MD 20794

CAT#

JOB NAME

TYPE

DIMENSIONS



Floor	20%	20%	20%	20%	20%	10%	10%	10%
Ceiling	80%	80%	80%	70%	70%	50%	50%	0%
Wall	70%	50%	30%	70%	50%	50%	30%	30%
RCR Zonal cavity coefficients HBR432 Spacing ratio Along 1.2 Across 1.3								
0	0.97	0.96	0.95	0.94	0.94	0.85	0.85	0.81
1	0.90	0.87	0.84	0.88	0.85	0.78	0.76	0.73
2	0.84	0.78	0.73	0.82	0.76	0.71	0.67	0.65
3	0.77	0.69	0.63	0.76	0.68	0.64	0.60	0.58
4	0.72	0.63	0.56	0.70	0.62	0.58	0.54	0.52
5	0.67	0.57	0.50	0.65	0.56	0.53	0.48	0.47
6	0.62	0.52	0.45	0.60	0.51	0.49	0.43	0.42
7	0.58	0.47	0.41	0.57	0.47	0.45	0.39	0.38
8	0.54	0.44	0.37	0.53	0.43	0.41	0.36	0.35
9	0.51	0.40	0.34	0.50	0.40	0.38	0.33	0.32
10	0.48	0.37	0.31	0.47	0.37	0.36	0.31	0.30

Floor	20%	20%	20%	20%	20%	10%	10%	10%
Ceiling	80%	80%	80%	70%	70%	50%	50%	0%
Wall	70%	50%	30%	70%	50%	50%	30%	30%
RCR Zonal cavity coefficients HBR654 Spacing ratio Along 1.2 Across 1.3								
0	0.89	0.89	0.88	0.87	0.87	0.79	0.78	0.75
1	0.84	0.80	0.77	0.82	0.78	0.72	0.70	0.67
2	0.77	0.72	0.67	0.75	0.70	0.65	0.62	0.60
3	0.72	0.64	0.58	0.70	0.63	0.59	0.55	0.53
4	0.66	0.58	0.52	0.65	0.57	0.54	0.49	0.48
5	0.61	0.52	0.46	0.60	0.51	0.49	0.44	0.43
6	0.57	0.47	0.41	0.56	0.47	0.45	0.40	0.39
7	0.53	0.43	0.37	0.52	0.43	0.41	0.36	0.35
8	0.50	0.40	0.34	0.49	0.40	0.38	0.33	0.32
9	0.47	0.37	0.31	0.46	0.36	0.35	0.30	0.30
10	0.44	0.34	0.28	0.43	0.34	0.33	0.28	0.27

Floor	20%	20%	20%	20%	20%	10%	10%	10%
Ceiling	80%	80%	80%	70%	70%	50%	50%	0%
Wall	70%	50%	30%	70%	50%	50%	30%	30%
RCR Zonal cavity coefficients HBR632 Spacing ratio Along 1.2 Across 1.3								
0	0.96	0.95	0.95	0.94	0.93	0.85	0.84	0.80
1	0.90	0.86	0.83	0.88	0.84	0.77	0.75	0.72
2	0.83	0.77	0.71	0.81	0.75	0.70	0.66	0.64
3	0.76	0.68	0.62	0.74	0.67	0.63	0.59	0.56
4	0.71	0.62	0.55	0.69	0.61	0.57	0.52	0.50
5	0.66	0.55	0.49	0.64	0.55	0.52	0.47	0.45
6	0.61	0.50	0.43	0.59	0.49	0.47	0.42	0.41
7	0.57	0.46	0.39	0.55	0.45	0.43	0.38	0.37
8	0.53	0.42	0.36	0.52	0.42	0.40	0.35	0.34
9	0.50	0.39	0.33	0.49	0.38	0.37	0.32	0.31
10	0.47	0.36	0.30	0.46	0.36	0.34	0.29	0.28

Dimensions and specifications subject to change without notice.



800-444-WATT ♦ www.mobern.com ♦

8200 Stayton Dr., Ste. 500, Jessup, MD 20794

CAT#		
JOB NAME		TYPE