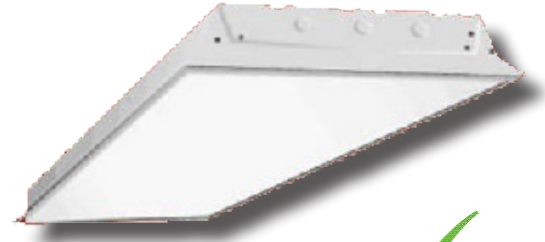


APPLICATIONS

Premium quality low profile troffer with an almost limitless range of applications. Ideal for all commercial and industrial buildings requiring general illumination with recessed configurations.

FEATURES & BENEFITS

- ◆ Min 80 CRI
- ◆ L70 life >60,000
- ◆ Corrosion and scratch resistant
- ◆ Smooth edges for easy handling
- ◆ Ends are secured by snap-in interlocking system
- ◆ .100 acrylic prismatic lens is standard
- ◆ Exclusive "Light Lock" frame reduces light leaks
- ◆ Flush steel door with rotary action cam latches and hinges from either side
- ◆ Easy access plate for quick wiring
- ◆ Equipped with Integral Earthquake Clips
- ◆ **ETL** listed for damp location



SPECIFICATIONS

Housing is die-formed and embossed from cold rolled steel. Wiring access plate and knockouts are provided on back of housing allowing for flexible greenfield attachment. Driver cover snaps easily into place eliminating the need for tools when accessing the driver. Prismatic lens is held within a hinged steel frame door. The heavy gauge door frame hinges downward on either side and is held in the closed position by two positive cam latches. Knockouts are provided on ends for continuous wiring. Listed by and bears **ETL** label.

ORDERING DATA

EXAMPLE: FHBG22-LED35DMV40

Series		Size	Gear	Wattage & Lumens		Driver Type ¹		Color Temp	
FHBG		14 1x4	LED	Standard 1x4		DMV	120-277VAC	30	3000K
LED Grid		22 2x2		22	22 Watts 2810 Lumens		Multivolt	35	3500K
		24 2x4		30	30 Watts 3585 Lumens		0-10V Dimming	40	4000K
				35	35 Watts 4090 Lumens	SDMV	Step dimming	50	5000K
				40	40 Watts 4590 Lumens		Multivolt		
				48	48 Watts 5385 Lumens				
				57	57 Watts 6370 Lumens				
				Standard 2x2					
				20	20 Watts 2300 Lumens				
				24	24 Watts 2600 Lumens				
				28	28 Watts 3000 Lumens				
				35	35 Watts 3600 Lumens				
				45	45 Watts 4470 Lumens				
				135	135 Watts 18200 Lumens				
				Standard 2x4					
				32	32 Watts 3970 Lumens				
				35	35 Watts 4345 Lumens				
				45	45 Watts 5500 Lumens				
				48	48 Watts 5900 Lumens				
				57	57 Watts 6735 Lumens				
				62	62 Watts 7000 Lumens				

1. Consult factory for Triac Dimming Options.

Options	
(Blank)	A12 .100 thick prismatic lens
125	A12 .125 thick prismatic lens
156	A19 .156 thick prismatic lens
CL	Clear .100 thick lens
CL125	Clear .125 thick lens
NL	No lens or frame
FR	High Optic Frosted
G3	Triple Gasketing
EM	12W, 1300 lumen, battery backup
EM5	5W, 650 lumen, battery backup
WG	Wire Guard

*See chart below for whip & cord ordering options

*Cord & Whip Ordering Chart (Add to End of Fixture Part Number)

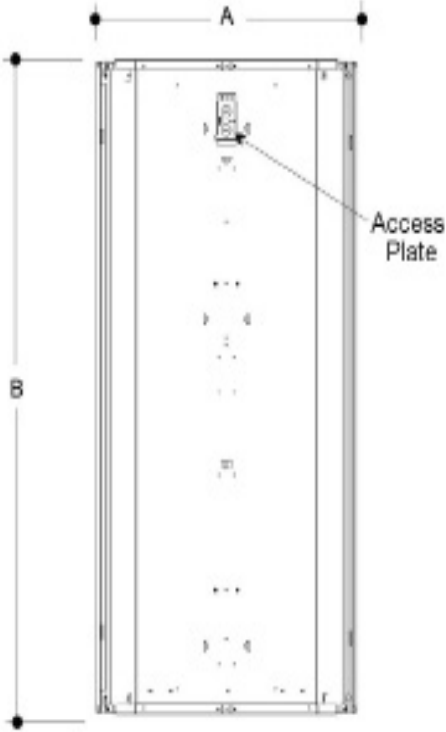
Part No.	# of Wires	Length	End Fitting	Finish	Voltage	Amps (TL Only)
WP - Whip	(Blank) 3 Wire	(Blank) 6 feet	(Blank) No Plug	BK - Black	(Blank) 120-277V	15 - 15 Amps
CS - Cordset	4W - 4 Wire	8 - 8 feet	P* - Standard Plug	WH - White	120 - 120V	20 - 20 Amps
	5W - 5 Wire	10 - 10 feet	TL* - Twist Lock		277 - 277V	
	6W - 6 Wire	12 - 12 feet			347 - 347V	
		15 - 15 feet			480 - 480V	

Dimensions and specifications subject to change without notice.

CAT#	
JOB NAME	
TYPE	

DIMENSIONS

TOP VIEWS



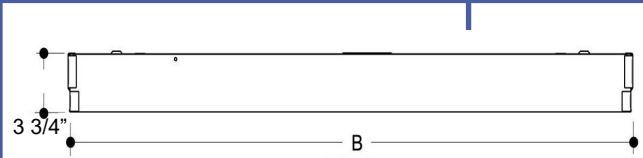
MODEL CONFIGURATION

A

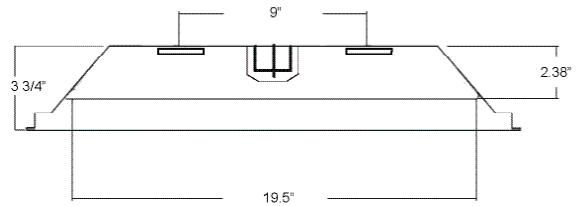
1' x 4'	12"	47 7/8"
2' x 2'	23 3/4"	23 3/4"
2' x 4'	23 3/4"	47 3/4"

SIDE VIEW

B



END VIEW



Dimensions and specifications subject to change without notice.

