

### APPLICATIONS

The **FHBC LED** is a high efficiency premier high bay fixture engineered for premium performance. A precision-formed reflector system available in enhanced white reflector is designed to achieve maximum light output for ceilings from 15 feet to 40 feet. Based on ceiling height, these fixtures can replace a fluorescent or traditional HID high bay while using 50% or less energy. Pendant, chain or stem mounting are available. The fixture is ideal suited for warehouses, manufacturing plants, sports facilities and retail spaces.

### FEATURES & BENEFITS

- ◆ 0-10V Dimming Driver standard
- ◆ Pendant, stem, cable, or chain hanging available
- ◆ Options and accessories include: Wireguard, lens, occupancy sensors, emergency packs and more
- ◆ Warranted up to 45°C ambient temperature. Consult for higher temp ratings.
- ◆ L<sub>70</sub> >100,000 hrs.
- ◆ Min CRI 82
- ◆ cETL<sub>us</sub> Listed



### SPECIFICATIONS

Housing is 22 gauge painted steel. Access plate in the back makes wiring fast and hassle-free. Back of fixture is designed with built in mounting holes for long hanger or cable kit. The fixture is not designed to be surface mounted to the ceiling or wall. Integral Occupancy Sensor is optional and is ideal for wire guard applications.

### ORDERING DATA

EXAMPLE: FHBC24LED48DMV40

FHBC		LED		Driver		Color Temp		Options & Accessories		
Series	Size	Gear	Wattage/Lumens							
FHBC LED Premier High Bay	24 24" Length	LED	<b>High Performance</b>		DMV	0-10V Dimming Multivolt 120-277VAC	30 3000K 35 3500K 40 4000K 50 5000K	See Options and Accessories Section		
	48 48" Length		24"							
		48	48 Watts	6400 Lumens	D480TF	480V with transformer 0-10V Dimming				
		57	57 Watts	7640 Lumens						
		63	63 Watts	9000 Lumens						
		72	72 Watts	10440 Lumens						
		90	90 Watts	12060 Lumens						
		100	100 Watts	13480 Lumens						
		114	114 Watts	16000 Lumens						
		144	144 Watts	19000 Lumens						
			48"							
		57	57 Watts	8000 Lumens						
		97	97 Watts	13795 Lumens						
		114	114 Watts	17560 Lumens						
		H118	H118 Watts	16600 Lumens						
		127	127 Watts	18000 Lumens						
		144	144 Watts	21305 Lumens						
		162	162 Watts	24000 Lumens						
		166	166 Watts	25150 Lumens						
		180	180 Watts	26855 Lumens						
		195	195 Watts	28410 Lumens						
		208	208 Watts	31440 Lumens						
		216	216 Watts	30000 Lumens						
		270	270 Watts	40285 Lumens						
		272	272 Watts	36000 Lumens						

DLC Standard	
FHBC48-LEDH118DMV50	Color Temp 50
DLC Premium	
FHBC48-LED97DMVxx	xx = Color Temp 35, 40, 50
FHBC48-LED114DMVxx	xx = Color Temp 35, 40, 50
FHBC48-LED144DMVxx	xx = Color Temp 35, 40, 50
FHBC48-LED166DMVxx	xx = Color Temp 35, 40, 50
FHBC48-LED180DMVxx	xx = Color Temp 35, 40, 50
FHBC48-LED195DMVxx	xx = Color Temp 35, 40, 50

Wattage and Lumens are calculated at 25°C ambient temp and 5000K.  
A tolerance of ± 10% is standard for both wattage and lumens.  
Dimensions and specifications subject to change without notice



CAT#	
JOB NAME	
TYPE	

### SUPER HIGH PERFORMANCE 150+ LPW

#### ORDERING DATA

EXAMPLE: FHBC242R-LEDSH48DMV30

FHBC		Wattage & Lumens		Driver Type		Color Temp		Options & Accessories	
Series	Size	24"		48"		30 3000K		See Options and Accessories Section	
<b>FHBC</b>	24 24" Length	<b>4R-LEDSH48</b>	48 Watts	7400 Lumens	<b>DMV</b>	0-10V Dimming	<b>35</b>	3500K	
LED Premier High Bay	48 48" Length	<b>4R-LEDSH57</b>	57 Watts	8600 Lumens	Multivolt	120-277VAC	<b>40</b>	4000K	
		<b>6R-LEDSH87</b>	87 Watts	13050 Lumens	<b>D480TF</b>	480V with transformer	<b>50</b>	5000K	
		<b>8R-LEDSH121</b>	121 Watts	18220 Lumens		0-10V Dimming			
		<b>3R-LEDSH87</b>	87 Watts	13050 Lumens					
		<b>4R-LEDSH121</b>	121 Watts	18220 Lumens					
		<b>5R-LEDSH131</b>	131 Watts	20030 Lumens					
		<b>6R-LEDSH161</b>	161 Watts	24290 Lumens					
		<b>8R-LEDSH195</b>	195 Watts	30030 Lumens					
		<b>8R-LEDSH230</b>	230 Watts	34500 Lumens					

Wattage and Lumens are calculated at 25°C ambient temp and 5000K.  
A tolerance of ± 10% is standard for both wattage and lumens.

#### TECHNICAL INFORMATION

##### OPTIONS-Factory Installed

- EM5** 5 Watts, 800 Lumens Battery Backup
- EM7** 7 Watts, 1100 Lumens, Battery Backup
- EM** 10 Watts, 1600 Lumens Battery Backup
- EM12** 12 Watts, 1900 Lumens, Battery Backup
- OS** Occ Sensor - On/Off
- OSD** Occ Sensor w/Dimming & Daylight Harvesting
- DH** Daylight Harvesting
- CS** 6' Cord 18/3
- CS8** 8' Cord 18/3
- CS12** 12' Cord 18/3
- CS8TL277** 8' Cordset 277V, 3-WIRE, NEMA L7-15P
- WP** 6' Whip-MC
- WP12** 12' Whip-MC
- WG** Wraparound Wire Guard
- 2NR** Narrow Option

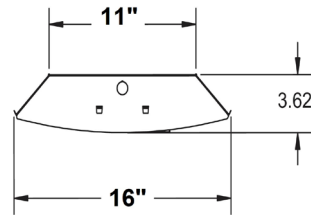
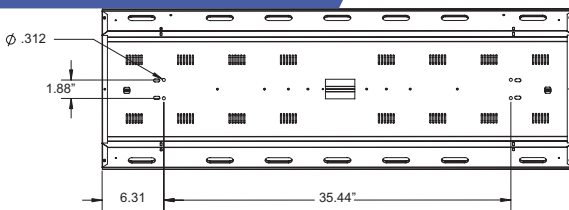
##### ACCESSORIES

- L1080** FHBC Lens Wraparound for 48" Body-Clear
- L1080-2FT** FHBC Lens Wraparound for 24" Body-Clear
- L1080-FR** FHBC Lens Wraparound for 48" Body-Frosted
- L1080-2FT-FR** FHBC Lens Wraparound for 24" Body-Frosted
- A-FHBC6WG** Wireguard - No door frame for 48" Body
- A-FHBC6WG-2FT** Wireguard - No door frame for 24" Body

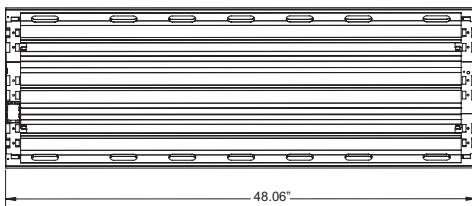
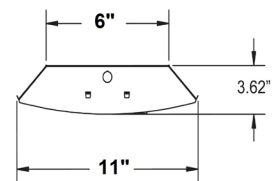
##### MOUNTING

- A144-XX** Footage - Tong hangers, End Mount (Pair) with footage of chain (xx=footage of chain)
- AC120-Toggle-2PK** yhook - 10' Cable Mounting Kit and 2 Spring Clips
- AC180-Toggle-2PK** yhook - 15' Cable Mounting Kit and 2 Spring Clips

#### DIMENSIONS



(2NR Narrow Option)



Dimensions and specifications subject to change without notice.

