

APPLICATIONS

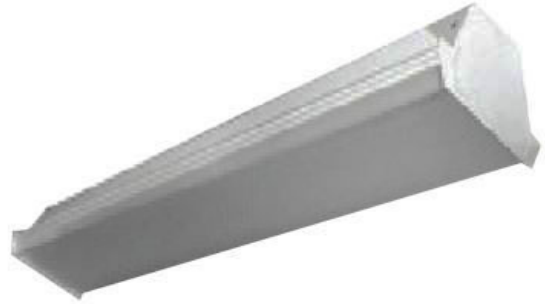
With 1, 2, or 3 rows of LED in cross section, and a clear acrylic #8 pattern lens, this wraparound is suitable for a wide variety of applications. A full wireway allows more uniform light distribution.

FEATURES & BENEFITS

- ◆ Suitable for a variety of applications such as corridors, stairwells and long run applications
- ◆ Min CRI 82

SPECIFICATIONS

Housing is a 22 gauge baked white enamel cold rolled steel body and ends. No tools required for driver access. Wiring knockouts are provided on back and ends of housing.



ORDERING DATA

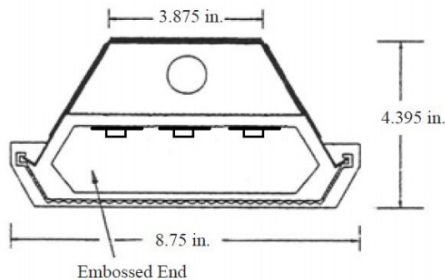
EXAMPLE: 774-48LED32DMV40

774	LED					
Series	Size	Gear	Wattage / Lumens	Driver	Color Temp	Options
774	48 48 inches	LED	4 ft. 32 32 Watts 3450 Lumens 48 48 Watts 5000 Lumens 57 57 Watts 5700 Lumens	DMV 120-277V Multivolt 0-10V Dimmable SDMV Step dimming Multivolt DHV 347-480VAC 0-10V Dimming D347V 347VAC 0-10V Dimming D120 Triac Dimming 120VAC D277 Triac Dimming 277VAC	30 3000K 35 3500K 40 4000K 50 5000K	EM 10W, ~1200 Lumen Battery backup EM7 7W ~840 Lumen Battery backup EM5 5W ~600 Lumen Battery backup WP 6' Whip 3 Wire
Consult factory for options						
**See chart below for whip & cord ordering options						

****Cord & Whip Ordering Chart (Add to End of Fixture Part Number)**

Part No.	# of Wires	Length	End Fitting	Finish	Voltage	Amps (TL Only)
WP - Whip	(Blank) 3 Wire	(Blank) 6 feet	(Blank) No Plug	BK - Black	(Blank) 120-277V	15 - 15 Amps
CS - Cordset	4 - 4 Wire	8 - 8 feet	P* - Standard Plug	WH - White	120 - 120V	20 - 20 Amps
	5 - 5 Wire	10 - 10 feet	TL* - Twist Lock		277 - 277V	
	6 - 6 Wire	12 - 12 feet			347 - 347V	
		15 - 15 feet			480 - 480V	

DIMENSIONS



Dimensions and specifications subject to change without notice.



CAT#	
JOB NAME	TYPE