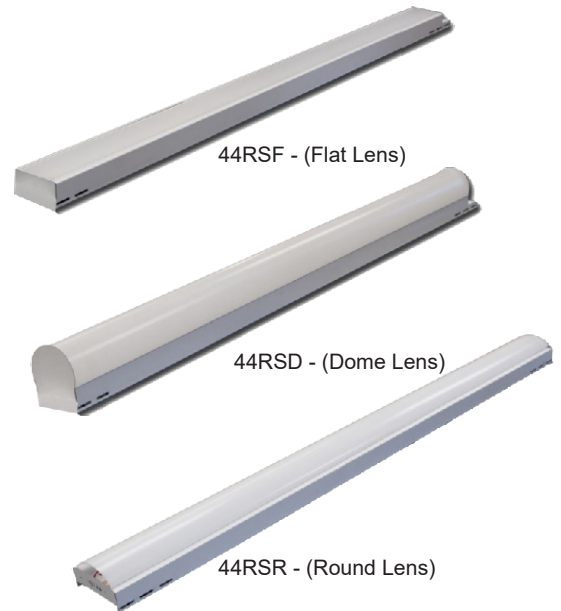


APPLICATIONS

Give your area a new clean and sleek look with this LED premium strip. This fixture is sure to enhance any environment. Choose between 3 aesthetic options: flat lens, dome lens or rounded lens, all provide energy savings and better quality lighting. These flexible options are cost effective and make this a perfect use for: Schools, retail, warehouse, storage or any other facility area currently using strip fixtures.

FEATURES & BENEFITS

- ◆ Flat Lens, Dome Lens or Rounded Lens
- ◆ Available in 48" and 96" (4' & 8' lengths). Consult for 2', 3', and 6'
- ◆ Easy assembly and maintenance
- ◆ MIN CRI 80
- ◆ _CETL_{US} listed for damp location
- ◆ Estimated L₇₀ > 60000 hrs. at 25°C
- ◆ Made in USA



ORDERING DATA

EXAMPLE: 44RSF48LED30DMV30

Series	Size	Gear	Wattage/Lumens	Driver	Color Temp	Options
44RSF LED Strip Flat Lens	48 48 inch 96 96 inch	LED	48 in. 30 30 Watts 3529 Lumens 41 41 Watts 4317 Lumens 58 58 Watts 6717 Lumens	DMV 120-277VAC 0-10V Dimming D347 347VAC 0-10V Dimmable	30 3000K 35 3500K 40 4000K 50 5000K	CS 6' cord 18/3 WP 6' whip 3 wire MC EM Emergency Battery Pack, 10 Watts 1300 Lumens OS Occupancy Sensor OSD Occupancy Sensor w/ Daylight Harvesting & Dimming
44RSD LED Strip Dome Lens			96 in. 60 60 Watts 6952 Lumens 82 82 Watts 8786 Lumens 116 116 Watts 13434 Lumens			
44RSR LED Strip Round Lens						

ACCESSORIES

A144-2 (2)V-hooks and (2) 2 ft chains

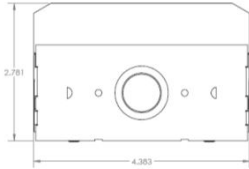
Dimensions and specifications subject to change without notice.



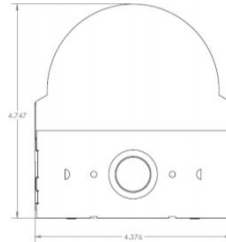
DIMENSIONS

Side View

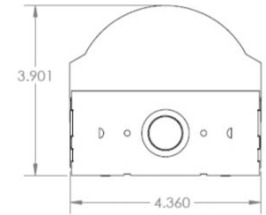
44RSF



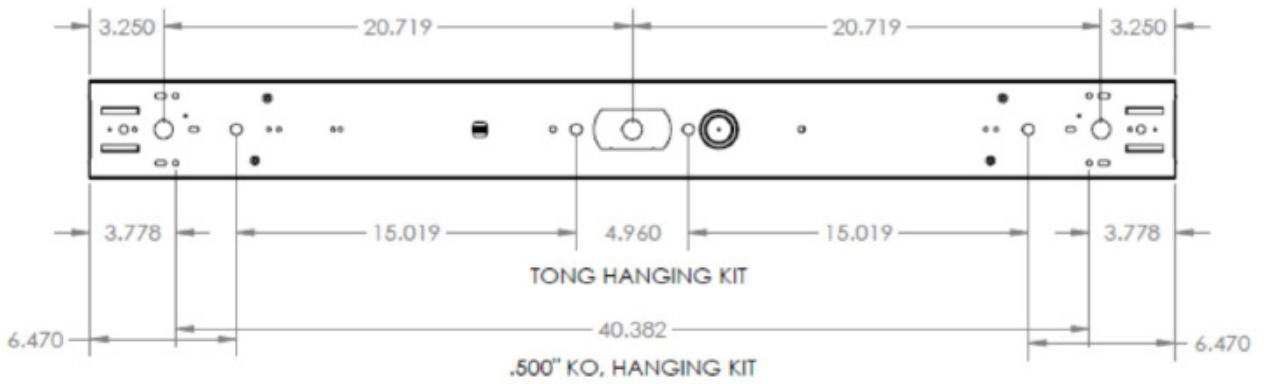
44RSD



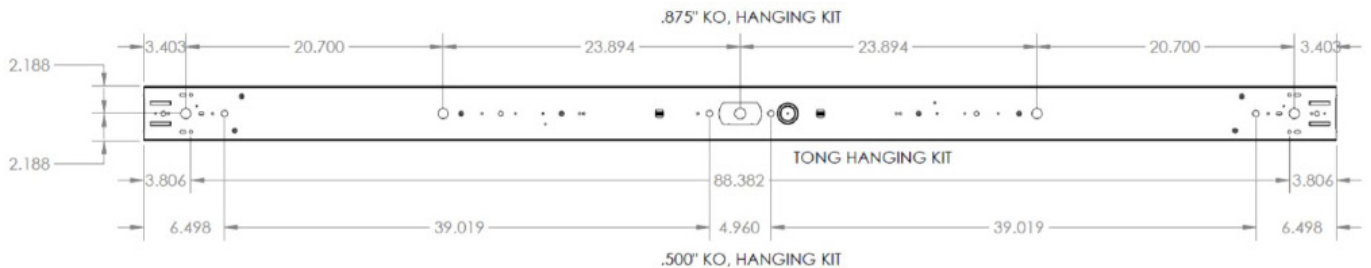
44RSR



4ft Dimensions



8ft Dimensions



Dimensions and specifications subject to change without notice.



◆ 800-444-WATT ◆ www.mobern.com ◆
8200 Stayton Dr., Ste. 500, Jessup, MD 20794

CAT#	
JOB NAME	
TYPE	